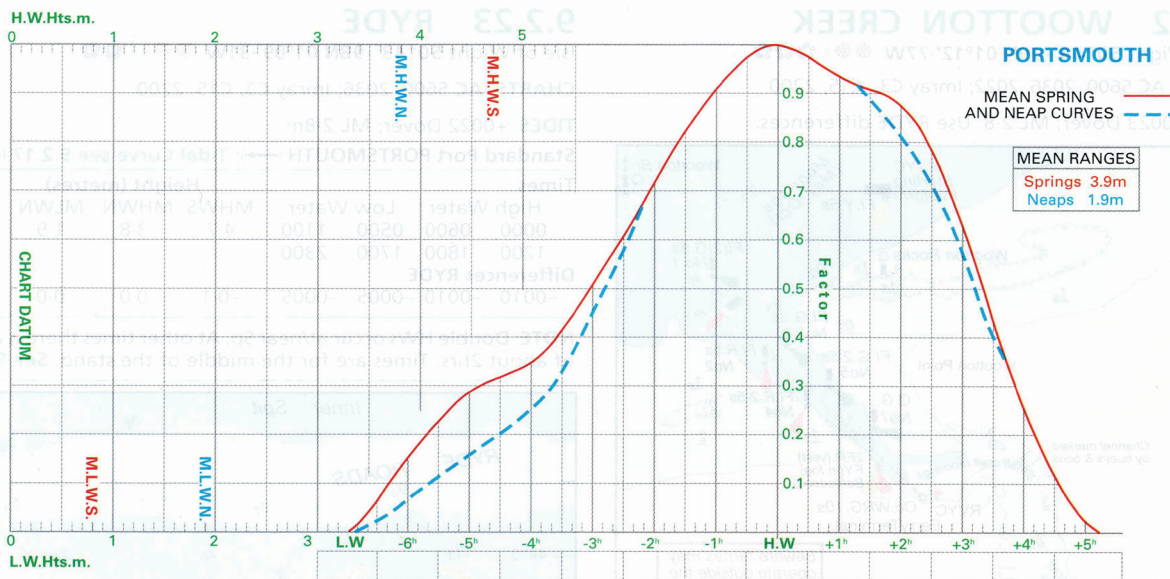


Anhang (Neu)

Im Anhang finden Sie sämtliche Unterlagen, welche zur Lösung der Aufgaben Kapitel F und G verwendet werden können.

Gezeitentabellen (Auszug)	50
Luminous Range Diagram	65
Geographical Range Table	65
Leuchtfeuerverzeichnis (Auszug)	66
Ablenkungstabelle	71

Bembridge – Portsmouth tides



9.2.24 BEMBRIDGE

Isle of Wight 50°41'·62N 01°06'·40W

CHARTS AC 5600, 2037, 2022; Imray C9, C3, C15, 2200

TIDES +0020 Dover

Standard Port PORTSMOUTH (→); Tidal Curve see 9.2.17 (←)

Times		Height (metres)					
High Water	Low Water	MHWS	MHWN	MLWN	MLWS		
0000	0600	0500	1100	4·7	3·8	1·9	0·8
1200	1800	1700	2300				
Differences BEMBRIDGE APPROACHES							
-0010	-0005	0000	+0005	+0·1	+0·1	0·0	+0·1
BEMBRIDGE HARBOUR							
+0020	0000	+0100	+0020	-1·5	-1·4	-1·3	-1·0
VENTNOR							
-0025	-0030	-0025	-0030	-0·8	-0·6	-0·2	+0·2
SANDOWN							
0000	+0005	+0010	+0025	-0·6	-0·5	-0·2	0·0

NOTE: Double HWs occur at/near Sp. At other times there is a stand of about 2hrs. Times are for the middle of the stand. See 9.2.17.

SHELTER Good, but approach difficult in strong N/NE winds. berths rafting on long pontoons at Duver Marina dredged to 2m, or dry out, with 1s fore and aft, on sandy beach to port just inside harbour ent. No 1 in chan and hbr, but Priory Bay is sheltered 1 in winds from S to WNW (dries inshore but 1/2M off gives 1·5m).

NAVIGATION Beware the gravel banks between St Helen's Fort, Nodes Pt and N to Seaview. The bar, between Nos 2A and 3 buoys, almost dries. Tide gauge removed. Depths over the bar updated every 60s are online at www.bembridgeharbour.co.uk. Speed limit 6kn.

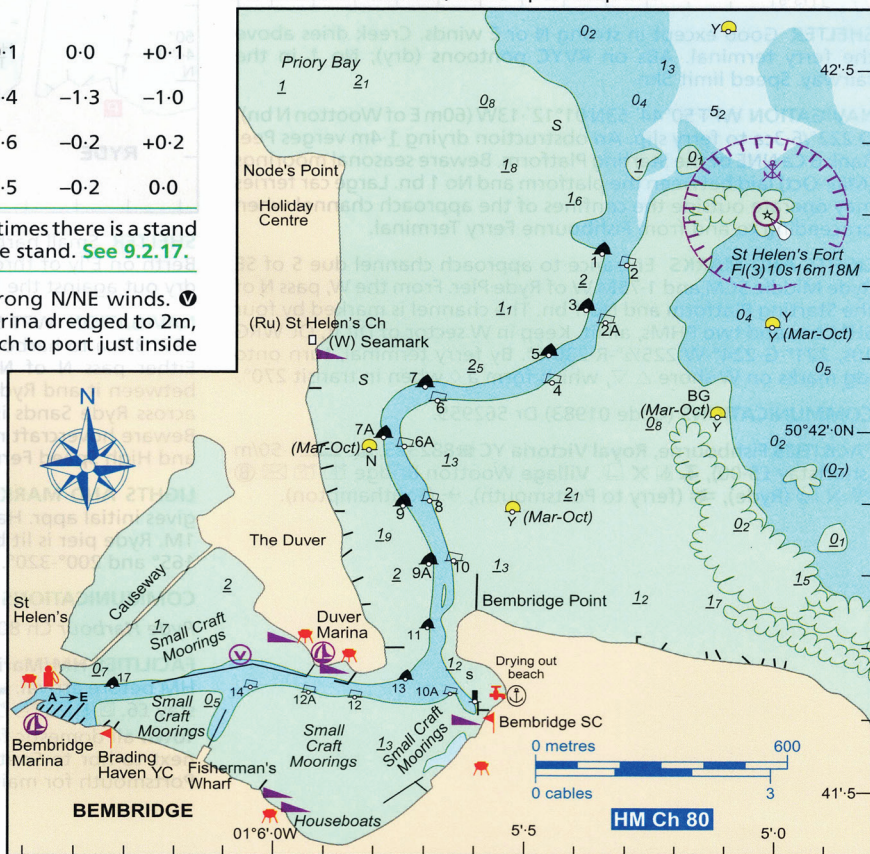
LIGHTS AND MARKS St Helen's Fort Fl (3) 10s 16m 8M; no 1 within 1ca of Fort. Conspic W daymark on shore where chan turns S. Pontoons and fingers lit at Duver and Fishermen's Wharf. Beware many unlit Y racing marks off Bembridge and Seaview (Mar-Oct).

COMMUNICATIONS (Code 01983) Dr 872614; HM 872828; Hbr staff Ch 80; Water Taxi Ch 80.

FACILITIES Duver Marina 872828, +4 140 from £2·65, drying out area £10 flat rate. St Helen's Quay YC 872289, 872289, Bembridge Marina permanent berthholders. Brading Haven YC 872289, 872289, Bembridge SC 872686.
Town 872289, 872289 (Ryde), 872289 (So'ton).

HARBOUR ON THE SOUTH COAST OF THE ISLE OF WIGHT

VENTNOR HAVEN, 50°35'·53N 01°12'·50W. AC 2045. Bkwns to protect FVs. Very exposed to E to SSE. 80 (in <F4; seasonal), 07976 009260 or VHF Ch 17 for availability. 80 (quay) 80. **TOWN** All domestic facilities, some up a steep hill.



Peel – Ramsey

9.10.10 PEEL

Isle of Man 54°13'·61N 04°41'·68W

CHARTS AC 2094, 2696, 5613; Imray C62; Y70

TIDES +0005 Dover; ML 2·9; Duration 0545

Standard Port LIVERPOOL (→)

Times		Height (metres)					
High Water	Low Water	MHWS	MHWN	MLWN	MLWS		
0000	0600	0200	0700	9·4	7·5	3·2	1·1
1200	1800	1400	1900				

Differences PEEL

+0010	+0010	-0020	-0030	-4·2	-3·2	-1·7	-0·7
-------	-------	-------	-------	------	------	------	------

SHELTER Good, except in strong NW to NE winds when ent should not be attempted. 4 Y (seasonal) off S groyne in about 2m. Fin keelers may be able to berth on N bkwr in 5m. Marina is in the Inner Harbour with berthing on pontoons and alongside harbour wall for boats up to 15m LOA. Pass dimensions on Ch 12. Approach dries 1·4m; access approx HW±2 when flapgate lowered and through swing bridge. Depth generally 2m, around pontoons.

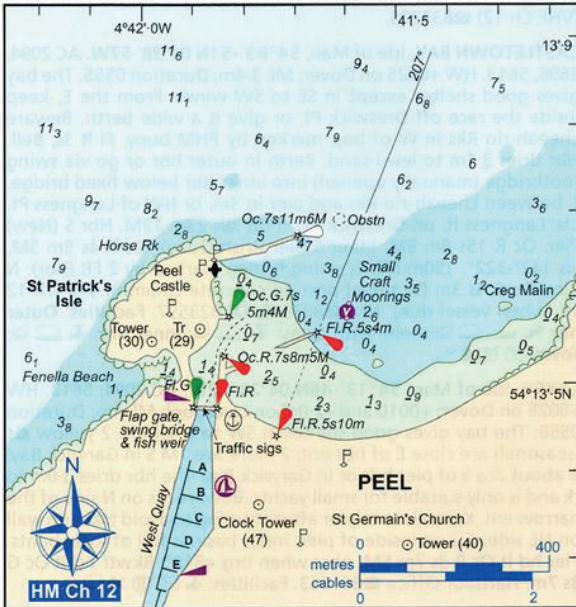
NAVIGATION WPT 54°14'·00N 04°41'·78W, 207°/5ca to groyne lt. Beware groyne on S side of harbour ent, submerged at half tide.

LIGHTS AND MARKS Power stn chy (83m, grey with B top) at S end of inner hbr is conspic from W and N; chy brg 203° leads to hbr ent. Groyne lt and Clock Tr (conspic) in transit 200° are almost on same line. Peel Castle and 2 twrs are conspic on St Patrick's Isle to NW of hbr. 207° ldg lts, Fl R 5s. The E and W abutments to the Inner Hbr ent are marked by lts Fl R 3s and Fl G 3s respectively. Traffic signals at marina entrance. Swing bridge has FR lts at centre span. Fl Y lts = flap gate being raised/lowered; bridge opening/closing.

COMMUNICATIONS (Code 01624) ☎ 0900 6243 322; Police 697327; Dr 843636. Harbour Office 842338, Mobile 07624 495036.

Peel Hbr VHF Ch 12 16 (HW±2), HO for Swing Bridge – other times call Douglas Hbr Control Ch 12 for remote bridge opening.

FACILITIES Outer Hbr, see 9.10.9; Marina 120 inc £1.72; access via flapgate; Peel Sailing & Cruising Club ☎ 842390, (key from Harbour Office), X (bus to Douglas & ferry), Ronaldsway.



9.10.11 PORT ST MARY

Isle of Man 54°04'·43N 04°43'·73W

CHARTS AC 2094, 2696, 5613; Imray C62; Y70

TIDES +0020 Dover; ML 3·2; Duration 0605

Standard Port LIVERPOOL (→)

Times		Height (metres)					
High Water	Low Water	MHWS	MHWN	MLWN	MLWS		
0000	0600	0200	0700	9·4	7·5	3·2	1·1
1200	1800	1400	1900				

Differences PORT ST MARY

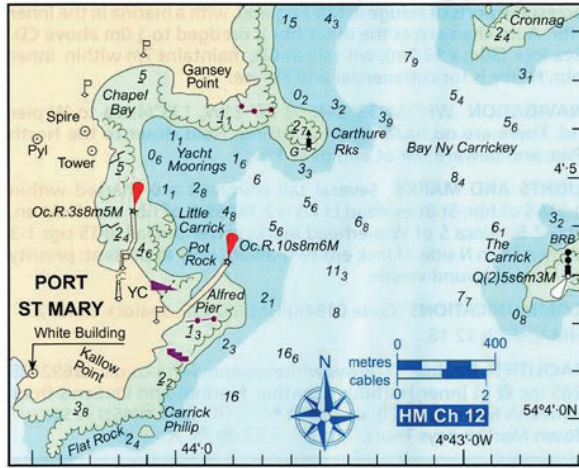
+0010	+0020	-0015	-0035	-3·5	-2·7	-1·6	-0·6
-------	-------	-------	-------	------	------	------	------

CALF SOUND

+0010	+0010	-0020	-0030	-3·3	-2·7	-1·2	-0·5
-------	-------	-------	-------	------	------	------	------

PORT ERIN

+0018	+0010	-0013	-0028	-4·1	-3·3	-1·6	-0·6
-------	-------	-------	-------	------	------	------	------



SHELTER Very good except in E or SE winds. ↓ S of Gansey Pt, but poor holding. 5 yellow (seasonal) between Alfred Pier and Little Carrick.

NAVIGATION WPT 54°04'·21N 04°43'·37W, 295°/0·3M to Alfred Pier lt. Rocky outcrops to SE of pier to 2ca offshore. Beware lobster/crab pots, especially between Calf of Man and Langness Pt.

LIGHTS AND MARKS Alfred Pier, Oc R 10s, in transit 295° with Inner Pier, Oc R 3s, W twr + R band, leads clear S of The Carrick Rk, in centre of bay, which is marked by IDM bn, Q (2) 5s 6m 3M. A conspic TV mast (133m), 5ca WNW of hbr, in transit with Alfred Pier lt leads 290° towards the hbr and also clears The Carrick rock.

COMMUNICATIONS (Code 01624) ☎ 0900 6243 322, Police 697327; Dr 832226. HM 833205.

Port St Mary Hbr VHF Ch 12 16 (when vessel due or through Douglas Hbr Control Ch 12).

FACILITIES Alfred Pier see 9.10.9; Inner Hbr dries 2·4m on sand; Isle of Man YC ☎ 832088, (bus to Douglas & ferry), Ronaldsway.

MINOR HARBOUR EAST OF CASTLETOWN

DERBY HAVEN, Isle of Man, 54°04'·65N 04°36'·45W. Tides & charts as above. Rather remote bay exposed only to NE/E winds. ↓ in centre of bay, NW of St Michael's Island, in 3-5m. A detached bkwr on NW side of the bay gives shelter to craft able to dry out behind it. lts: Iso G 2s on S end of bkwr. Aero FR (occas) at Ronaldsway airport, NW of bay. Facilities: at Castletown (1½M) or Port St Mary.

AREA 10 – NW England

STANDARD TIME (UT)
For Summer Time add ONE hour in non-shaded areas

LIVERPOOL (GLADSTONE DOCK) LAT 53°27'N LONG 3°01'W

Dates in **red** are **SPRINGS**
Dates in **blue** are **NEAPS**

TIMES AND HEIGHTS OF HIGH AND LOW WATERS

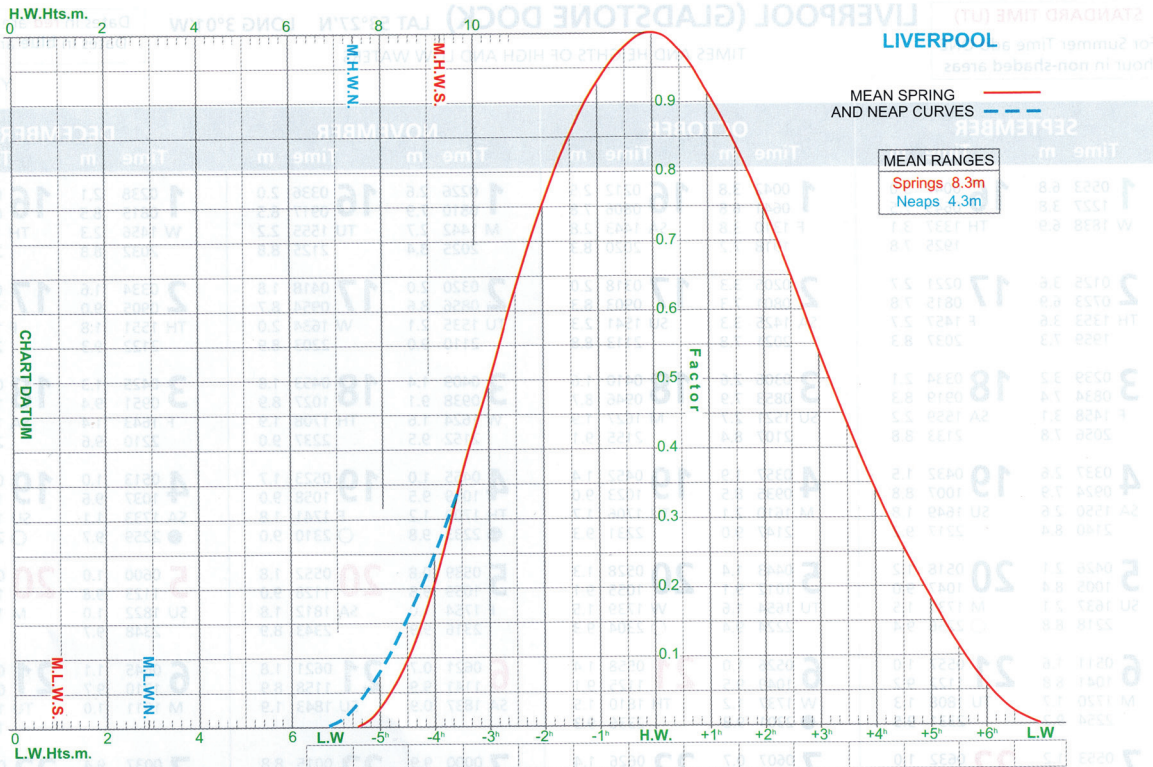
YEAR 2021

JANUARY		FEBRUARY		MARCH		APRIL	
Time	m	Time	m	Time	m	Time	m
1 0008	8.9	16 0058	9.0	1 0015	9.6	16 0041	9.0
F 1223	9.0	SA 1311	9.3	M 1230	9.8	TH 1331	9.6
1921	1.7	2014	1.4	1935	0.5	2028	0.9
2 0047	8.9	17 0136	8.7	2 0054	9.6	17 0109	8.8
0727	1.8	0821	1.9	0743	0.8	0752	1.6
SA 1302	9.0	SU 1350	9.0	TU 1310	9.8	W 1323	8.9
2002	1.7	2052	1.8	2013	0.7	2007	1.7
3 0128	8.8	18 0213	8.4	3 0135	9.5	18 0138	8.6
0808	2.0	0856	2.3	0820	1.0	0819	1.9
SU 1344	8.9	M 1429	8.7	W 1351	9.6	TH 1354	8.6
2044	1.8	2126	2.2	2050	1.0	2033	2.0
4 0212	8.6	19 0252	8.1	4 0216	9.1	19 0208	8.3
0850	2.2	0930	2.7	0858	1.4	0848	2.3
M 1429	8.8	TU 1510	8.4	TH 1434	9.2	F 1427	8.2
2128	2.0	2201	2.6	2128	1.5	2103	2.5
5 0301	8.4	20 0334	7.7	5 0301	8.7	20 0241	7.9
0936	2.4	1008	3.0	0941	1.8	0923	2.8
TU 1520	8.6	W 1557	8.0	F 1524	8.7	SA 1504	7.7
2218	2.2	2241	2.9	2214	2.2	2140	3.0
6 0355	8.2	21 0425	7.4	6 0355	8.1	21 0322	7.4
1029	2.6	1057	3.4	1034	2.4	1008	3.2
W 1618	8.4	TH 1653	7.6	SA 1627	8.0	SU 1555	7.2
2316	2.4	2335	3.2	2316	2.8	2231	3.5
7 0457	8.0	22 0526	7.1	7 0506	7.7	22 0423	7.0
1131	2.7	1203	3.6	1149	2.9	1118	3.6
TH 1724	8.3	F 1758	7.3	SU 1752	7.5	M 1714	6.8
8 0022	2.4	23 0043	3.4	8 0044	3.1	23 0558	6.8
0608	8.0	0640	7.1	0635	7.5	1258	3.6
F 1241	2.8	SA 1320	3.6	M 1327	2.9	TU 1852	6.8
1836	8.3	1910	7.3	1927	7.5	2046	7.9
9 0135	2.4	24 0154	3.3	9 0216	3.0	24 0131	3.6
0719	8.1	0751	7.3	0800	7.7	0730	7.1
SA 1357	2.6	SU 1429	3.3	TU 1456	2.5	W 1421	3.1
1947	8.4	2016	7.5	2046	7.9	2012	7.3
10 0244	2.2	25 0254	3.0	10 0330	2.5	25 0245	3.0
0824	8.4	0849	7.7	0907	8.2	0835	7.7
SU 1508	2.3	M 1526	2.9	W 1605	2.0	TH 1525	2.4
2052	8.6	2111	7.8	2145	8.3	2107	8.0
11 0346	1.9	26 0345	2.6	11 0428	2.0	26 0343	2.4
0922	8.8	0936	8.1	0959	8.7	0924	8.4
M 1612	1.9	TU 1617	2.4	TH 1658	1.5	F 1618	1.7
2150	8.9	2157	8.2	2230	8.7	2151	8.6
12 0442	1.6	27 0431	2.3	12 0514	1.7	27 0433	1.7
1015	9.1	1017	8.5	1041	9.0	1006	9.0
TU 1710	1.5	W 1703	2.0	F 1741	1.2	SA 1706	1.1
2243	9.1	2238	8.5	2308	8.9	2232	9.2
13 0533	1.5	28 0514	1.9	13 0553	1.4	28 0519	1.2
1103	9.3	1055	8.8	1118	9.3	1046	9.5
W 1802	1.3	TH 1747	1.7	SA 1817	1.1	SU 1750	0.6
2332	9.2	2317	8.8	2341	9.0	2311	9.6
14 0620	1.4	29 0557	1.7	14 0626	1.3	29 0602	0.8
1149	9.5	1133	9.1	1151	9.3	1126	9.8
TH 1850	1.1	F 1830	1.4	SU 1849	1.1	M 1832	0.3
15 0016	9.1	30 0638	1.5	15 0012	9.1	30 0643	0.5
0704	1.5	1211	9.3	0657	1.3	1207	10.0
F 1231	9.4	SA 1912	1.2	M 1223	9.3	TU 1912	0.3
1934	1.2			1917	1.2		
15 0110	8.9	15 0110	8.9	15 0110	8.9	15 0110	8.9
0755	1.6	0755	1.6	0755	1.6	0755	1.6
M 1322	9.2	M 1322	9.2	M 1322	9.2	M 1322	9.2
2019	1.5	2019	1.5	2019	1.5	2019	1.5
31 0034	9.2	31 0034	9.2	31 0031	9.8	31 0031	9.8
0719	1.3	0719	1.3	0723	0.5	0723	0.5
SU 1250	9.4	SU 1250	9.4	W 1248	9.9	W 1248	9.9
1953	1.1	1953	1.1	1950	0.5	1950	0.5

Chart Datum: 4.93 metres below Ordnance Datum (Newlyn). HAT is 10.3 metres above Chart Datum.

FREE monthly updates. Register at www.reedsnauticalalmanac.co.uk

Liverpool



9.10.17 LIVERPOOL

Merseyside 53°24'·22N 03°00'·28W (Liver Bldg) 🌸🌸🌸🌸🌸🌸

CHARTS AC 1826, 1978, 1951, 3490, 5613; Imray C62, C52

TIDES +0015 Dover; ML 5·2; Duration 0535

Standard Port LIVERPOOL (GLADSTONE DOCK) (←)

Times		Height (metres)					
High Water	Low Water	MHWS	MHWN	MLWN	MLWS		
0000	0600	0200	0700	9·4	7·5	3·2	1·1
1200	1800	1400	1900				

Differences SEACOMBE (ALFRED DK)

+0007	+0007	+0000	+0000	-0·1	-0·1	-0·3	-0·2
-------	-------	-------	-------	------	------	------	------

GARSTON

+0026	+0022	+0017	+0020	+0·3	+0·1	-0·4	-0·5
-------	-------	-------	-------	------	------	------	------

EASTHAM (River Mersey)

+0014	+0014	+0006	+0006	+0·2	0·0	0·0	+0·2
-------	-------	-------	-------	------	-----	-----	------

HALE HEAD (River Mersey)

+0035	+0030	ND	ND	-2·5	-2·6	ND	ND
-------	-------	----	----	------	------	----	----

WIDNES (River Mersey)

+0045	+0050	+0355	+0340	-4·3	-4·5	-2·8	-0·6
-------	-------	-------	-------	------	------	------	------

FIDDLER'S FERRY (River Mersey)

+0105	+0120	+0535	+0445	-6·0	-6·4	-2·7	-0·6
-------	-------	-------	-------	------	------	------	------

HILBRE ISLAND (River Dee)

-0011	-0008	-0013	-0018	-0·4	-0·3	+0·1	+0·2
-------	-------	-------	-------	------	------	------	------

MOSTYN DOCKS (River Dee)

-0015	-0010	-0025	-0025	-0·9	-0·8	ND	ND
-------	-------	-------	-------	------	------	----	----

CONNAH'S QUAY (River Dee)

+0005	+0020	+0350	+0335	-4·7	-4·5	DR	DR
-------	-------	-------	-------	------	------	----	----

CHESTER (River Dee)

+0110	+0110	+0455	+0455	-5·4	-5·5	DR	DR
-------	-------	-------	-------	------	------	----	----

COLWYN BAY

-0015	-0015	ND	ND	-1·6	-1·4	ND	ND
-------	-------	----	----	------	------	----	----

LLANDUDNO

-0009	-0021	-0031	-0038	-1·7	-1·6	-0·9	-0·6
-------	-------	-------	-------	------	------	------	------

NOTE: LW time differences at Connah's Quay give the end of a LW stand lasting about 3¾hrs at sp and 5hrs at nps. A bore occurs in the R Dee at Chester.

SHELTER Good at marinas in Brunswick/Coburg docks and in Canning/Albert Docks. Fair weather ⚓ on the SW side of river. Strong winds from any direction raise a swell on the bar. Wind against tide causes steep, breaking seas in outer reaches of R Mersey with disturbed waters into the Crosby Channel.

NAVIGATION WPT 53°32'·02N 03°20'·98W, Bar light float, 111°/2·8M to Q1 NCM It F. From Q1 to marina is 15·5M via Queens and Crosby Channels. Both have training banks which cover it and it is unsafe to navigate between these and the floats/buoys. Sp tidal streams exceed 5kn within the river. Elsewhere great caution is needed as the whole area (R Dee, R Mersey to R Alt and N to Morecambe Bay) is littered with sandbanks and damaged training walls. Local knowledge is advisable inshore outside marked passages.

Leeds and Liverpool Canal (BWB) gives access to E Coast, ent at Stanley Dock. Max draught 1·0m, air draught 2·2m, beam 4·3m, LOA 18·3m. Liverpool to Goole 161M, 103 locks.

Manchester Ship Canal, ent at Eastham Locks (outer wall bn Iso YR 4s), leads 31M to Salford Quays or R Weaver for boatyards at Northwich. Obtain info pack from Peel Ports <https://www.peelports.com/media/2259/mpf3-pleasure-craft-induction-pack-2017-2018.pdf>.

R Dee: WPT 53°25'·13N 03°13'·17W, Hilbre Swash HE2 ECM buoy, Q (3) 10s, (chan shifts). From the W use Welsh Chan. The Dee estuary mostly dries.

LIGHTS AND MARKS Bar SWM It float, Fl 5s Racon. Keep 5ca clear of SPM, 5ca W of Bar It float. Formby SWM buoy, Iso 4s, is at the ent to Queen's Chan which is marked by light floats and buoys, and 3 NCM buoys, numbered Q1-Q12. Crosby Chan is similarly marked C1-C23. From Crosby SWM buoy, Oc 5s, the track upriver is approx 145°. The Liver Bldg (twin spires) and Port of Liverpool Bldg (dome) are conspic on the E bank opposite Birkenhead Docks.

COMMUNICATIONS (Code 0151) C ☎ 709 0141. Port Ops 94 6134/5; 📞949 6095.

Contact *Mersey VTS* Ch 12 16 (H24) before Bar It and maintain listening watch in fairway for traffic info, nav and gale warnings. Movements, and weather are b/cast on Ch 09 at HW-3 and -2.

Canning Dock/Liverpool Marina Ch M. Eastham Locks Ch 07 (H24). Manchester Ship Canal Ch 14. Liverpool NTM for further detail.

AREA 18 – Central N France

MINOR HARBOUR CLOSE SOUTH OF CAP DE LA HAGUE

GOURY, Manche, 49°42'·85N 01°56'·83W. AC 1114, 3653, 5604.2; SHOM 7158, 5636, 7133 (essential). HW -0410 on Dover (UT); ML 5.1m. See Omonville-la-Rogue. For visitors, appr at slack water nps with no swell and good vis; a fair weather hbr only, dries to flattish shingle. At tidal diamond M, 1.3M W, the N-S stream reaches 9.7kn at sp, 5.8kn at nps.

Cap de la Hague (Gros du Raz) Lt ho is 0.5M NW of hbr; La Foraine WCM Lt bn is 1.0M to the W. 065° ldg lts, by day: Front W patch with R ■ at end of bkwr; rear, W pylon, lead between Diotret to S and Les Grios to N. ⚓ W of the 2 ⚓ slips in 1.7m or dry out on shingle banks SE of the bkwr.

☎02-33-52-85-92. Facilities: ✕ ☒ at Auderville (0.5M).

9.18.7 DIÉLETTE

Manche, 49°33'·20N 01°51'·79W 🌊🌳🌳🌳🌳🌳

CHARTS AC 2669, 3653; SHOM 7158, 7133; Navi 528, 1014; Imray C33A

TIDES HW -0430 on Dover (UT); ML 5.4m

Standard Port ST MALO (→)

Times		Height (metres)			
High Water	Low Water	MHWS	MHWN	MLWN	MLWS
0100	0800	12.2	9.2	4.4	1.5
1300	2000	1500	2000		
Differences DIÉLETTE					
+0045	+0035	+0020	+0035	-2.5	-1.8
				-0.9	-0.3

SHELTER Good in marina, but when retaining wall covers, boats may surge fore and aft; rig good springs. No entry in strong W'lies.

NAVIGATION WPT 49°33'·45N 01°52'·16W, 140°/650m to W bkwr Lt. Appr is exposed to W'ly winds/swell; at springs 2kn cross tide at ent. Caution: drying rks 3ca E of ⊕, marked by unlit WCM buoy. 1.5M WSW, keep seaward of WCM Lt buoy off Flamanville power stn. Outer hbr ent dredged CD +0.5m; with Coefficient <55 access for 2m draft. W side outer hbr dries approx 5m.

LIGHTS AND MARKS The Flamanville power stn is conspic from afar 1.2M to SW, with pylons on the skyline and 3 conspic domes lower. W bkwr Lt ho, W twr/G top. Lts as chartlet.

COMMUNICATIONS CROSS 02-33-52-16-16; ☎ 02-33-04-93-17; 📞 08-92-68-08-50; Emergency 15; ☎ 02-33-23-34-00; Brit Consul 01-44-51-31-00; Dr 02-33-52-99-00; HM VHF Ch 09, summer

9.18.8 CARTERET

Manche 49°22'·08N 01°47'·33W 🌊🌳🌳🌳🌳🌳

CHARTS AC 2669, 3655; SHOM 7157, 7158, 7133; Navi 1014; Imray C33A

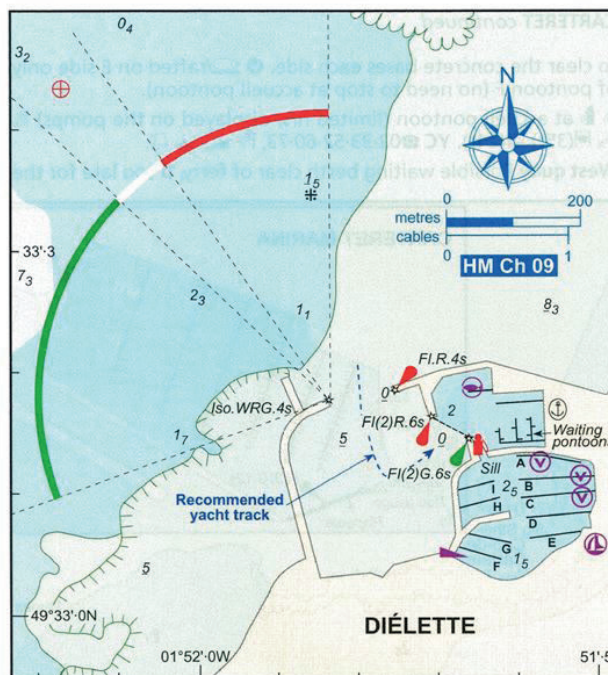
TIDES -0440 Dover; ML 5.9; Duration 0545

Standard Port ST MALO (→)

Times		Height (metres)			
High Water	Low Water	MHWS	MHWN	MLWN	MLWS
0100	0800	12.2	9.2	4.4	1.5
1300	2000	1500	2000		
Differences CARTERET					
+0030	+0020	+0015	+0030	-1.6	-1.1
				-0.9	-0.3
PORTBAIL					
+0030	+0025	+0025	+0030	-0.8	-0.5
				-0.4	-0.1
ST GERMAIN-SUR-AY 49°13'·6N 01°39'·3W					
+0025	+0025	+0035	+0035	-0.7	-0.4
				-0.2	+0.1
LE SÉNÉQUET 49°05'·9N 01°41'·0W					
+0015	+0015	+0025	+0025	-0.2	-0.3
				+0.1	+0.1

SHELTER Good in marina, but very crowded at weekends and in season. No safe ⚓s offshore.

NAVIGATION WPT 49°21'·86N 01°47'·36W, 006°/420m to W bkwr Lt. From N/NW, keep well off shore on appr to avoid rks 1M N of Cap de Carteret extending about 7ca from coast. From W beware Trois Grune Rks (dry 1.6m) about 4M offshore, marked by WCM



0800-1300, 1330-2000LT, winter 0800-1200, 1330-1700LT; Aff Mar 02-33-23-36-00; YC 02-33-04-14-78; Tourist office ☎02-33-52-81-60.

FACILITIES

Bassin de Commerce, ♣ waiting pontoons, E side; fuel berth 🌳 H24 cr/debit cards, W side by Marina sill, both in 2m. **Marina** ☎02-33-53-68-78. portdielette@cc-lespieux.com www.cc-lespieux.fr 420+70 ♣ €3.50 inc ☎, wi-fi. Enter about HW±3, tide gate over sill (CD+3.5m) drops when tide reaches CD+5m, to show 1.5m depth on gauge by sill; ♣ berths pontoons A and E, ends of B (S side) and C (N side). If surging around HW, rig springs. ☎ ✕ grocery/wines, 📞 €1.70, 📞 €4.10, 📞 (40t). Ferry to Cl.

Village basic foods, mkt Sun am, ✕ ☒. **Flamanville**, 15 mins' uphill walk. ☎ ☒.

Les Pieux ✕ ☎ ☒ ☒. Free daytime shuttle bus, Marina/Flamanville/ Les Pieux, Jul/Aug, every 2 or 2½hrs.

It buoy. Appr dries ½M offshore and is exposed to fresh W/SW winds which can make ent rough. Caution: strong cross-streams on the flood.

Best appr at HW-1 to avoid max tidal stream, 4½kn sp. The outer end of W bkwr covers at big springs. Bar, at right angles to W bkwr, dries 4m; a SHM buoy east of the W bkwr marks a shifting shoal patch. Best water is to port of a mid-channel course. The chan dries progressively to firm sand, and is dredged to 4m and 4.5m just W of the marina.

LIGHTS AND MARKS Cap de Carteret, grey Lt twr, G top, and conspic Sig stn are 8ca 295° from the ent. Breakwater and channel lts as chartlet. Marina sill is marked by PHM/SHM Lt bcns, and Y poles on the retaining wall.

COMMUNICATIONS CROSS/☎ 02-33-52-16-16; 📞 02-33-22-91-77; Auto 08-92-68-02-50; Police 02-33-53-80-17; ☎ 02-33-04-90-08; Brit Consul 01-44-51-31-00; ☎ (Valognes) 02-33-40-14-39; Signal station VHF 09, 16; Marina VHF Ch 09; Tourist Office 02-33-04-90-58.

FACILITIES

Marina ☎02-33-04-70-84. www.barneville-carteret.net barneville-carteret @wanadoo.fr 311 + 60 ♣ €2.95 (Apr-Sep; discounts possible Mon-Thu). Access HW ±2½ for 1.5m draft over sill 5m; lifting flapgate retains 2.3m within. IPTS N side of marina ent control ent/exit (sigs 2 & 4). Cross the sill squarely, ie heading NE,

Continued overleaf

Carteret – Granville

CARTERET *continued*

to clear the concrete bases each side. ⚠️/rafted on E side only of pontoon F (no need to stop at accueil pontoon).

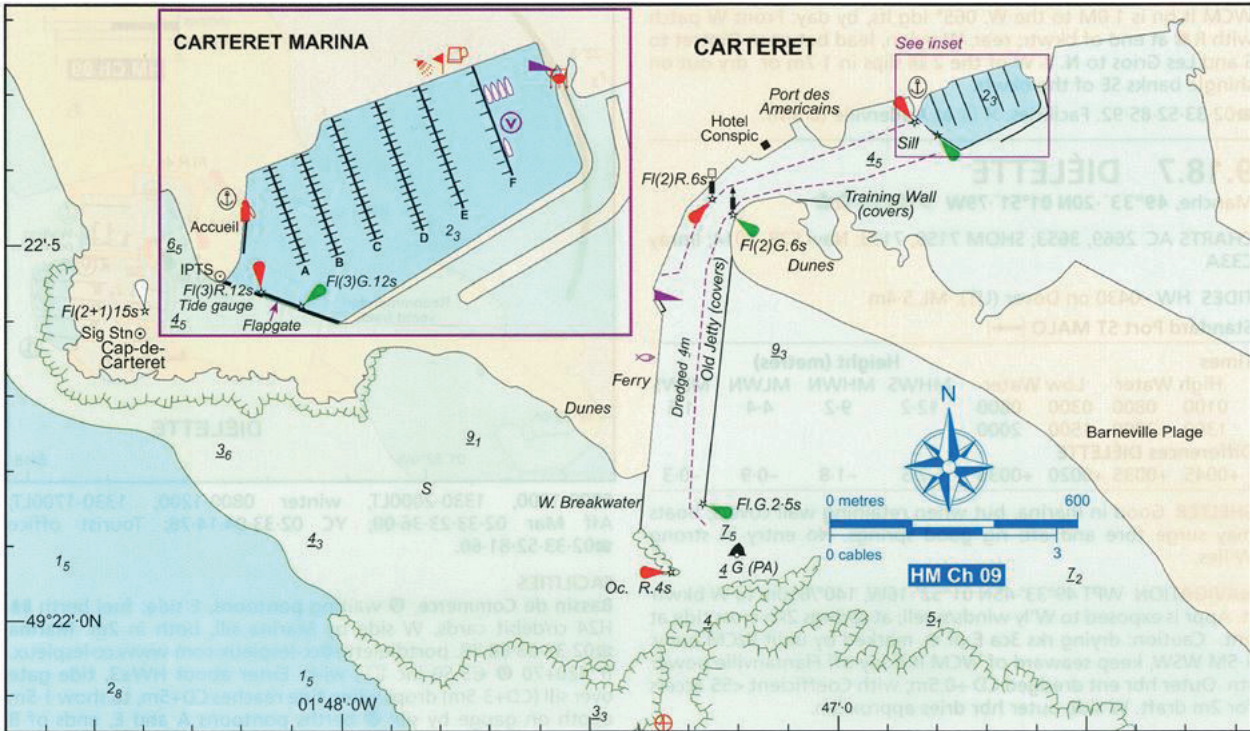
🚰 at accueil pontoon (limited hrs, displayed on the pumps) 🚰
🚰(35t) 🚰(24t). YC 02-33-52-60-73, 📞 📠 📧.

West quay Possible waiting berth clear of ferry, if too late for the

marina. A 1.5m draft boat can stay afloat for 6hrs np, 9hrs sp. ⚠️ free for 6hrs then at 50% of marina rates. 🚰 📞.

Other options: Dry out in the tiny Port des Américains and basin close W of marina (up to 5m at HW); or on fine sand SW of marina.

Town ✕ 📞 📠 📧 📡 📞 (Valognes) → (Cherbourg). Ferry Cherbourg, Jersey.



9.18.9 PORTBAIL

Manche 49°19'·72N 01°42'·42W (Basin ent) 📞 📞 📞 📞

CHARTS AC 2669, 3655; SHOM 7157, 7133; Navi 1014; Imray C33A

TIDES See Carteret. HW -0440 on Dover; ML 6.3m; Duration 0545

SHELTER Good in all winds. Occasional swell after SW gales.

NAVIGATION WPT 49°18'·25N 01°44'·58W (off chartlet, abeam unlit 'PB' SWM buoy) 042°/1.5M to training wall lt bcn. 7ca offshore the 042° ldg line crosses banks drying 5.3m, thence between a pair of unlit PHM/SHM buoys, least depth 8.1m. Beware very strong tidal stream, esp during sp flood (4-5k) at basin ent. When base of training wall bcn is covered, there is > 2.5m in the chan, dredged 5.2m. Frequent silting (sand) reported, Y buoy marks e worst bank, following a local vessel (of similar draught) is recommended.

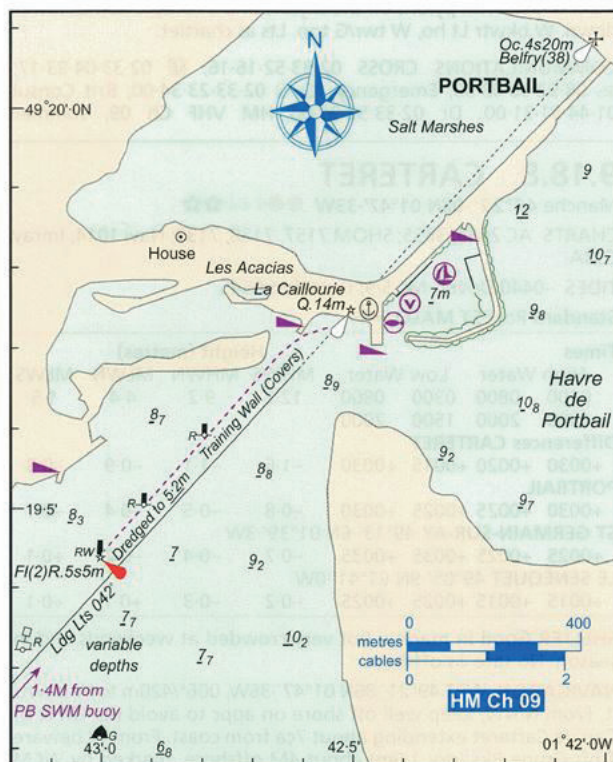
LIGHTS AND MARKS A water twr (38m) is conspic 6ca NNW of ent. Ldg marks/lts 042°: Front (La Caillourie) W pylon, R top; rear, church belfry in town. Trng wall, which covers near HW, head: W mast/R top, followed by 2 R perches. See chartlet and Lights, buoys and waypoints.

COMMUNICATIONS CROSS 02-33-52-16-16; ☎ 02-33-04-90-08 (Carteret); Brit Consul 01-44-51-31-00; Port/marina VHF Ch 09.

FACILITIES Yacht basin dries 7.0m, frequent dredging needed. Enlarged ⚠️ pontoon parallel to road on NW side of basin; also ⚠️ on the E side of adjacent stone FV jetty; or as directed. Pontoons with fingers take up rest of basin, locals only <7.5m LOA, but occ. berths for visitors by prior arrangement.

HM 02-33-04-83-48 (15 Jun-31 Aug, tide times; 0830-1200 and 1400-1700). portbail@wanadoo.fr www.portbail.com 160 + 30 📞 €1.41. 📞 📞 📞 (5t). YC 02-33-04-86-15, ✕ 📞 📞.

Town (½M by causeway) ✕ 📞 📞 📞 📞 📞 (Valognes).



AREA 18 – Central N France

9.18.10 GRANVILLE

Manche 48°49'·94N 01°35'·93W (Marina ent)

CHARTS AC 3656, 3659; SHOM 7156, 7341; Navi 534, 535; Imray C33B

TIDES -0510 Dover; ML 7.1; Duration 0525

Standard Port ST MALO (→)

Times		Height (metres)					
High Water	Low Water	MHWS	MHWN	MLWN	MLWS		
0100	0800	12.2	9.2	4.4	1.5		
1300	2000						
Differences REGNÉVILLE-SUR-MER							
+0010	+0010	+0030	+0020	+0.5	+0.5	0.0	0.0
GRANVILLE							
+0010	+0005	+0025	+0015	+0.7	+0.5	+0.1	0.0
CANGALE							
0000	0000	+0010	+0010	+0.8	+0.7	+0.1	+0.1

SHELTER Good in the marina. Appr is rough in strong W winds. ↓ in 2m about 4ca WSW of Le Loup to await the tide.

NAVIGATION WPT 48°49'·60N 01°36'·30W (abm Le Loup IDM) 042°/0-40M to S bkwr lt. Beware rks seaward of La Fourchie WCM bcn twr, pot markers off Pte du Roc and 0.4m patches on Banc de Tombelaine, 1M SSW of Le Loup Lt. At night best to keep at least 8ca W of Pte du Roc to avoid these dangers.

At bkwr hd turn port wide into marina ent to avoid yachts leaving; cross the sill between R/G piles. Ent/exit under power; speed limit 5kn in the near approach, 3kn in hbr. The 5 R piles, Fl Y 2.5s, mark the covering wall of a windsurfing/dinghy area to stbd.

LIGHTS AND MARKS Pte du Roc is a conspic headland with large old bldgs and lt ho, grey twr, R top; the Sig stn and church spire are also obvious. The twin domes of St Paul's church in transit 034° with Le Loup lead towards the marina ent. No ldg lts, but S bkwr hd on with TV mast leads 057° to ent; hbr lts are hard to see against town lts. 3.5M W of Pte du Roc, Le Videcoq rock

drying 0.8m, is marked by a WCM lt buoy. See chartlet and Lights, buoys and waypoints for lt details.

COMMUNICATIONS CROSS 02-33-52-16-16; 02-33-61-26-51; Auto 08-92-68-08-50; Police 02-33-91-27-50; 02-33-50-19-90; Brit Consul 01-44-51-31-00; 02-33-91-50-00; Dr 02-33-50-00-07; Port HM 02-33-50-20-06, VHF Ch 09, 16 (HW±1½); Aff Mar 02-33-91-31-40; Marina VHF Ch 09, 0800-2200 Jul/Aug.

FACILITIES Hével Marina 02-33-50-20-06. www.port.granville.cci.fr herel@granville.cci.fr. Depth over sill shown on digital display at marina S bkwr elbow: eg 76 = 7.6m; 00 = no entry. Beware turbulence inside sill with 1.3m to 2.2m. 850+150 Jun-Sep, €3.10 in least depth 2.5m as indicated on SW side pontoon G and NW side pontoon H; in 1.5m pontoon V; (vessels >15m +€4.11 p/d, per additional metre); multihulls +50%. 200m from marina. SHOM, free wi-fi, (20t) (0.6t)

YC de Granville 02-33-50-04-25, X, Port à Sec, St Nicolas 02-33-61-81-53; STL Nautisme 02-33-69-22-75.

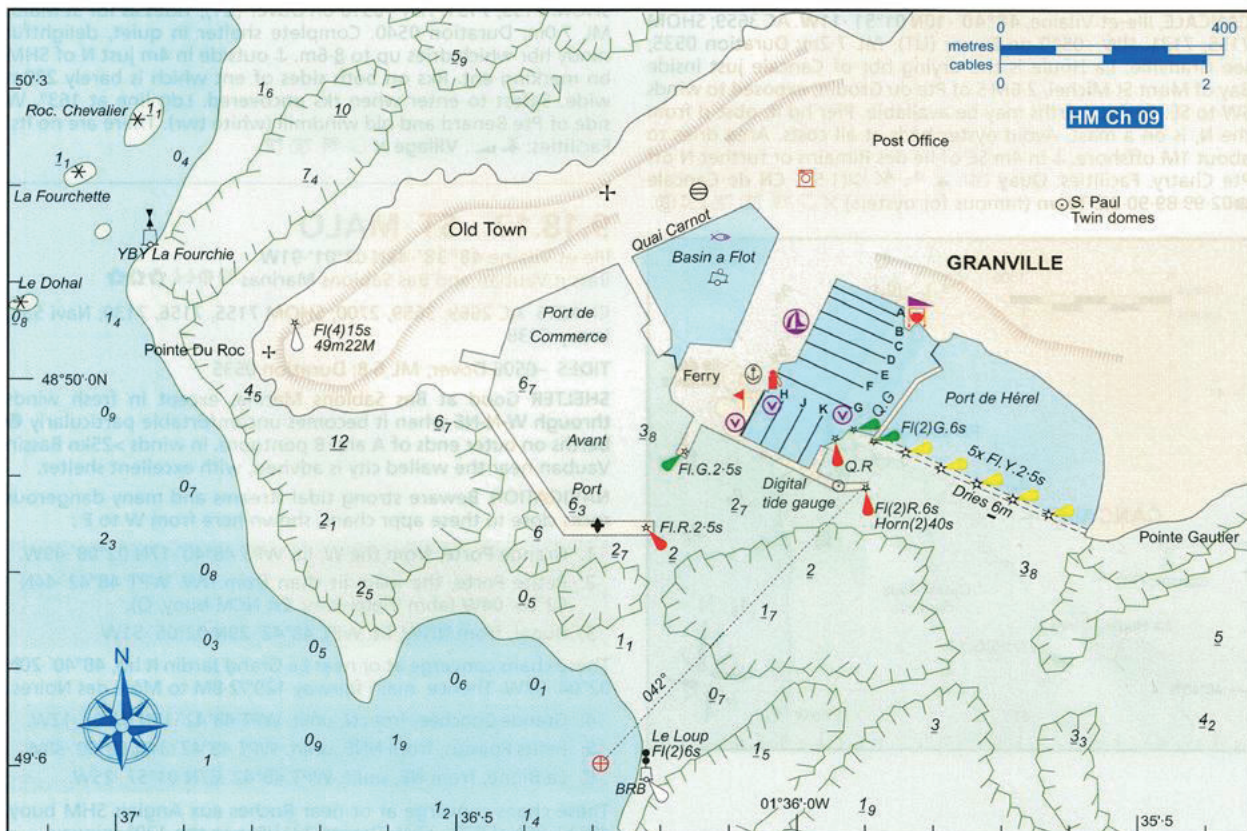
Town (Dinard). Ferry UK via Jersey or Cherbourg.

MINOR HARBOUR 10M NORTH OF GRANVILLE

REGNÉVILLE, Manche, 48°59'·72N 01°34'·05W (SHM buoy abeam Pte d'Agon). AC 2669, 3656; SHOM 7156, 7133. HW-0500 on Dover (UT); ML 7.0m; Duration 0535. See Granville. A seriously drying hbr on the estuary of R. La Sienné; few yachts visit, a magnet for hardy adventurers seeking sand and solitude.

From 48°57'·65N 01°38'·86W (2.2M E of La Cathéu SCM buoy) identify Pte d'Agon lt ho, W twr/R top, and Regnéville's 028° dir lt, both 4M NE at the river mouth (see Lights, buoys and waypoints). Thence track 056°/3.8M across the drying estuary to the SHM buoy (Lat/Long in line 1) marking a drying mole extending SW from the sandspit with landing stages to stbd; a small pontoon at Regnéville is 1.2M NNE. Drying heights are from 9m-12.7m off Pte d'Agon.

Access HW -1 to +2 for 1.3m draft. Approx 80 moorings inc 0s. YC 02-33-46-36-76 cregnevilleais@free.fr. Facilities: Quay, (25t). **Town** Tourist office 02-33-45-88-71.



AREA 18 – Central N France

STANDARD TIME UT -01
 Subtract 1 hour for UT
 For French Summer Time add
 ONE hour in non-shaded areas

ST MALO **LAT 48°38'N LONG 2°02'W**
 TIMES AND HEIGHTS OF HIGH AND LOW WATERS

Dates in red are **SPRINGS**
 Dates in blue are **NEAPS**

YEAR 2021

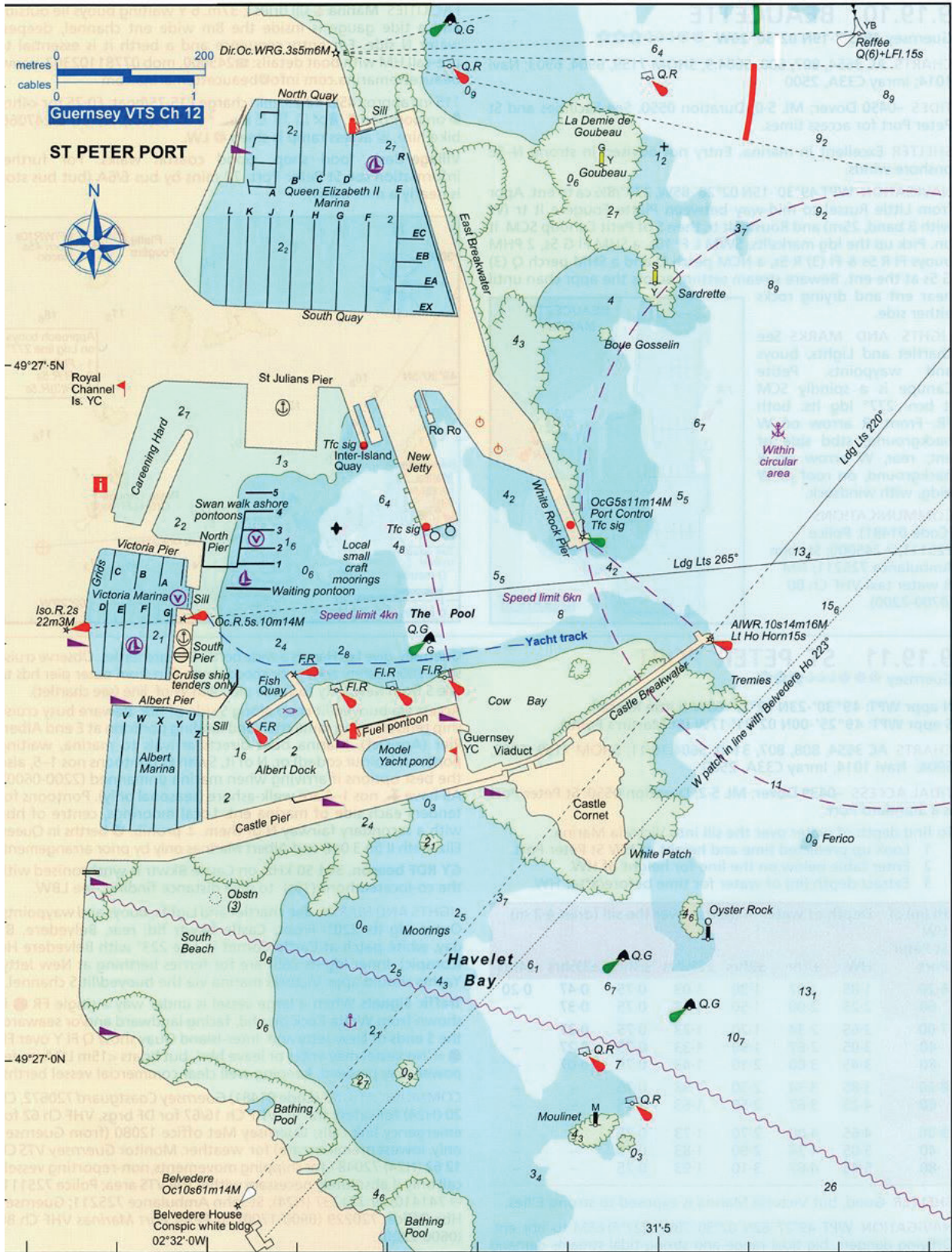
MAY		JUNE		JULY		AUGUST									
Time	m	Time	m	Time	m	Time	m								
1	0437 1.6 0958 11.6 SA 1654 2.3 2217 11.4	16	0355 2.9 0925 10.5 SU 1607 3.3 2135 10.6	1	0554 3.1 1125 10.0 TU 1813 3.9 2349 9.9	16	0503 3.3 1040 10.0 W 1721 3.7 2255 10.1	1	0617 3.3 1147 9.9 TH 1833 3.9 ☉	16	0541 2.9 1113 10.4 F 1758 3.2 2329 10.5	1	0000 9.5 0645 4.2 SU 1223 9.2 1905 4.7	16	0647 3.5 1222 9.9 M 1918 3.9
2	0518 2.5 1043 10.7 SU 1734 3.3 2304 10.4	17	0425 3.4 0959 10.0 M 1640 3.8 2211 10.0	2	0647 3.7 1224 9.4 W 1912 4.3 ☉	17	0550 3.6 1131 9.6 TH 1813 4.0 2351 9.8	2	0008 9.8 0700 3.8 F 1235 9.4 1922 4.3	17	0626 3.2 1201 10.1 SA 1848 3.6 ☉	2	0053 8.9 0736 4.7 M 1326 8.7 2013 5.0	17	0055 9.7 0750 4.1 TU 1337 9.4 2038 4.2
3	0604 3.3 1137 9.7 M 1826 4.1 ☉	18	0503 3.9 1041 9.4 TU 1723 4.3 2258 9.4	3	0054 9.4 0748 4.1 TH 1334 9.1 2022 4.5	18	0646 3.8 1233 9.5 F 1916 4.1 ☉	3	0103 9.4 0751 4.2 SA 1334 9.1 2022 4.6	18	0022 10.2 0718 3.5 SU 1259 9.8 1950 3.8	3	0212 8.6 0853 5.0 TU 1452 8.7 2144 5.0	18	0223 9.3 0918 4.3 W 1512 9.5 2208 3.9
4	0005 9.5 0706 4.1 TU 1251 9.0 1940 4.7	19	0552 4.3 1140 8.9 W 1823 4.7 ☉	4	0208 9.3 0856 4.1 F 1448 9.2 2132 4.3	19	0057 9.7 0753 3.8 SA 1343 9.5 2029 4.0	4	0208 9.1 0852 4.4 SU 1443 9.1 2130 4.5	19	0128 9.9 0825 3.7 M 1411 9.7 2105 3.8	4	0338 8.7 1016 4.7 W 1609 9.1 2258 4.5	19	0357 9.6 1046 3.9 TH 1637 10.0 2326 3.3
5	0132 9.1 0828 4.3 W 1427 8.9 2113 4.6	20	0008 9.0 0702 4.5 TH 1308 8.7 1945 4.7	5	0317 9.4 0959 3.9 SA 1549 9.5 2232 4.0	20	0209 9.8 0906 3.6 SU 1454 9.9 2142 3.5	5	0317 9.1 0958 4.3 M 1549 9.3 2234 4.3	20	0245 9.9 0942 3.7 TU 1528 10.0 2222 3.5	5	0444 9.2 1121 4.2 TH 1706 9.7 2354 3.9	20	0512 10.2 1201 3.2 F 1741 10.8
6	0302 9.2 0951 4.0 TH 1546 9.3 2228 4.1	21	0137 9.1 0830 4.3 F 1434 9.1 2111 4.2	6	0413 9.8 1055 3.6 SU 1639 10.0 2323 3.6	21	0319 10.2 1017 3.2 M 1600 10.4 2250 3.0	6	0418 9.4 1058 4.0 TU 1644 9.7 2330 3.9	21	0402 10.1 1058 3.3 W 1641 10.4 2333 2.9	6	0536 9.8 1214 3.7 F 1753 10.3	21	0033 2.6 0611 10.9 SA 1302 2.6 1833 11.6
7	0409 9.8 1056 3.5 F 1640 10.0 2324 3.4	22	0256 9.6 0950 3.7 SA 1542 9.9 2222 3.5	7	0501 10.2 1144 3.3 M 1723 10.4	22	0425 10.8 1123 2.6 TU 1700 11.0 2353 2.4	7	0510 9.8 1151 3.7 W 1731 10.2	22	0512 10.6 1206 2.9 TH 1745 11.0	7	0043 3.3 0621 10.3 SA 1301 3.2 1835 10.9	22	0130 2.0 0700 11.5 SU 1354 2.1 1919 12.1
8	0458 10.4 1147 3.0 SA 1723 10.6	23	0401 10.4 1057 2.9 SU 1639 10.7 2325 2.6	8	0009 3.2 0543 10.5 TU 1228 3.0 1802 10.8	23	0525 11.3 1225 2.2 W 1756 11.6	8	0018 3.5 0556 10.1 TH 1237 3.3 1813 10.6	23	0038 2.4 0615 11.1 F 1308 2.4 1841 11.6	8	0128 2.8 0703 10.8 SU 1346 2.7 1915 11.4	23	0219 1.6 0743 11.9 M 1439 1.8 2000 12.4
9	0011 2.9 0540 10.9 SU 1230 2.6 1801 11.0	24	0458 11.2 1157 2.1 M 1731 11.5	9	0050 3.0 0623 10.7 W 1307 2.8 1838 11.0	24	0053 1.9 0622 11.6 TH 1322 1.9 1849 12.0	9	0102 3.1 0638 10.5 F 1320 3.0 1852 10.9	24	0138 1.9 0709 11.5 SA 1404 2.1 1931 12.0	9	0212 2.4 0742 11.2 M 1428 2.3 1953 11.8	24	0301 1.4 0822 12.1 TU 1518 1.7 2037 12.4
10	0051 2.6 0619 11.2 M 1309 2.4 1836 11.3	25	0023 1.9 0552 11.9 TU 1254 1.6 1820 12.1	10	0128 2.8 0659 10.9 TH 1343 2.7 1911 11.2	25	0149 1.6 0716 11.9 F 1415 1.7 1939 12.2	10	0143 2.9 0717 10.7 SA 1400 2.8 1929 11.1	25	0231 1.6 0758 11.8 SU 1453 1.9 2016 12.2	10	0254 2.0 0820 11.6 TU 1509 2.0 2031 12.0	25	0337 1.5 0856 12.0 W 1551 1.8 2111 12.2
11	0127 2.4 0654 11.4 TU 1343 2.2 1908 11.5	26	0118 1.4 0642 12.3 W 1346 1.2 1908 12.5	11	0203 2.7 0733 10.9 F 1418 2.7 1944 11.2	26	0241 1.4 0807 11.9 SA 1503 1.7 2027 12.2	11	0223 2.7 0755 10.9 SU 1439 2.7 2006 11.3	26	0318 1.5 0842 11.8 M 1537 1.9 2058 12.2	11	0334 1.8 0857 11.7 W 1548 1.9 2109 12.1	26	0408 1.7 0928 11.7 TH 1619 2.2 2141 11.8
12	0200 2.3 0726 11.4 W 1414 2.2 1938 11.5	27	0210 1.1 0730 12.5 TH 1434 1.1 1953 12.6	12	0238 2.6 0807 10.9 SA 1451 2.7 2017 11.2	27	0329 1.5 0854 11.8 SU 1548 2.0 2112 12.0	12	0303 2.5 0832 11.0 M 1517 2.6 2043 11.4	27	0400 1.6 0922 11.7 TU 1615 2.0 2137 11.9	12	0412 1.7 0934 11.7 TH 1625 1.9 2146 12.0	27	0434 2.2 0956 11.3 F 1643 2.7 2209 11.2
13	0230 2.3 0756 11.3 TH 1443 2.3 2007 11.5	28	0257 1.0 0817 12.4 F 1518 1.3 2038 12.5	13	0311 2.7 0841 10.8 SU 1525 2.8 2051 11.1	28	0414 1.7 0939 11.5 M 1631 2.3 2156 11.6	13	0342 2.4 0910 11.1 TU 1556 2.6 2122 11.4	28	0437 1.9 0958 11.4 W 1649 2.4 2213 11.5	13	0448 1.9 1011 11.5 F 1701 2.2 2224 11.6	28	0457 2.9 1023 10.7 SA 1704 3.3 2236 10.4
14	0259 2.4 0825 11.2 F 1511 2.5 2035 11.3	29	0341 1.3 0903 12.0 SA 1600 1.8 2122 12.0	14	0346 2.8 0917 10.6 M 1559 3.1 2128 10.9	29	0456 2.2 1022 11.0 TU 1711 2.8 2239 11.0	14	0421 2.5 0950 11.0 W 1635 2.7 2201 11.2	29	0509 2.4 1032 10.9 TH 1720 3.0 2247 10.9	14	0524 2.3 1049 11.1 SA 1738 2.7 2304 11.0	29	0519 3.5 1049 10.1 SU 1727 4.0 2304 9.7
15	0327 2.6 0854 10.9 SA 1538 2.8 2104 11.0	30	0425 1.7 0949 11.4 SU 1641 2.4 2207 11.4	15	0423 3.0 0957 10.3 TU 1638 3.4 2209 10.5	30	0537 2.7 1103 10.4 W 1751 3.4 2322 10.4	15	0500 2.6 1030 10.8 TH 1715 2.9 2243 10.9	30	0539 3.0 1105 10.3 F 1749 3.6 2321 10.2	15	0601 2.9 1130 10.5 SU 1821 3.3 ☉ 2352 10.3	30	0546 4.2 1120 9.4 M 1800 4.7 ☉ 2342 8.9
31	0508 2.4 1035 10.7 M 1724 3.2							31	0609 3.6 1140 9.7 SA 1821 4.2 ☉	31	0627 4.9 1209 8.7 TU 1854 5.3				

Central N France

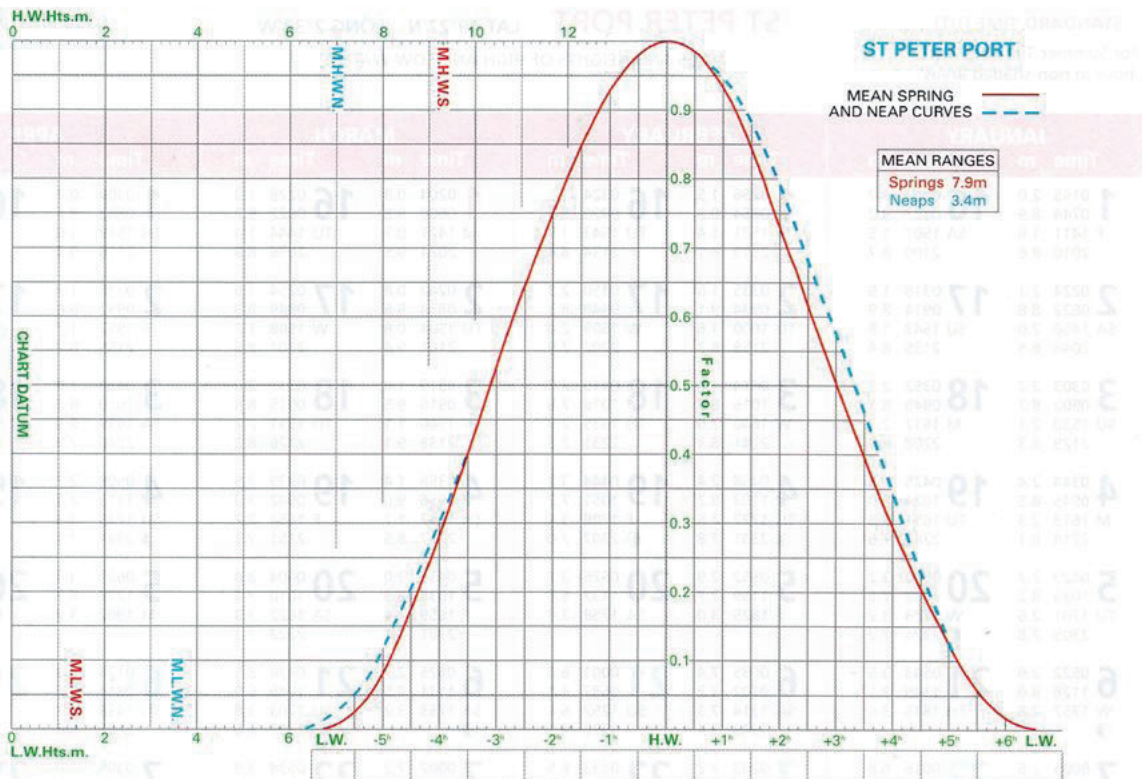
Chart Datum is 6-29 metres below IGN Datum. HAT is 13-6 metres above Chart Datum.

FREE monthly updates. Register at www.reedsnauticalalmanac.co.uk

St Peter Port



AREA 19 – Channel Islands



Max LOA/draft, 12.8m/2.1m but 1.5m at N and S ends (deeper draft, enquire ahead); max stay normally 14 days; but you must use your own hose; free wi-fi.

QE II Marina times vary, esp Winter, ☎726071, free wi-fi.
Castle Pier ☎726071 (dries springs, check tides) Summer (01/05–01/09) M–F, 0800–1730. Sat, 0830–1730 Sun, 0830–1230. Winter, closed Sun. ACA, .

Royal Channel Islands YC ☎723154, **Guernsey YC** ☎725342, **Town** . Ferries to Poole, Portsmouth, Jersey (St Helier/Gorey), St Malo, Diélette, Carteret, Sark, Herm; .

MINOR HARBOURS AND ANCHORAGES AROUND GUERNSEY

Hbrs and ⚓ages are listed clockwise from the north. All have buoys to St Peter Port (from cliff-top level on the E and S coasts).

EAST COAST

Bordeaux Hbr 49°29'·31N 02°30'·37W. Small drying hbr full of moorings. Rky appr and strong crosstide. Open to E. Café.

Havelet Bay 49°27'·06N 02°31'·68W. Enter between SHM buoy QG and PHM buoy QR, marking Oyster Rk, bn 'O', and Moulinet Rk, bn M. SHM and PHM It buoys about 100m closer inshore. Crowded ⚓ in summer but sheltered in SW gales; no ⚓s. Landing slip close W of Castle Cornet. Power cables on chartlet are normally buried to 1m but should be avoided. Beware swimmers far out.

Soldier's Bay 49°27'·06N 02°31'·68W. Good holding on sand; open to E. Beware Boue Sablon and rks off Les Terres Point. Anfré Rk (3₂) bn A, is 4ca offshore. Steps to cliff path.

Fermain Bay 49°26'·05N 02°31'·95W. Good holding on sand; open to E. Beware Gold Fisher Rk (3-6) and Gabrielle Rk (2-1). Popular tourist beach. .

SOUTH COAST

In centre of first bay W of St Martin's Pt, beware Mouillière (8-5) 49°25'·28N 02°32'·86W. S'lies can bring swell above half tide.

Petit Port Good holding on sand. Steep steps lead up to the cliff-top.

Moulin Huet Good holding on sand. Tea garden and hotel.

Saints Bay Good holding on sand. Below half tide beware uncharted rock in middle and unburied telephone cable on E side. ⚓ outside moorings with trip line. Café, hotel, bar.

Icart Bay Beware Fourquie de la Moye (3-1) 49°25'·28N 02°32'·86W between Icart Pt and Pte de la Moye. Within Icart Bay are:

Jaonnet. Good holding on sand off small beach or further E off rky shore. Exposed to S. No facilities. Cliff path inland.

Petit Bôt Bay Beware drying reef on E side. A short swell often works in. up hill to hotel, . Better ⚓ close W at:

Portelet 49°25'·11N 02°35'·28W. Good holding on sand. Sheltered from N and W. No access inland. Facilities via dinghy/Petit Bôt.

WEST COAST

Good visibility and AC 807 essential; an E'ly wind is desirable. Pass outside Les Hanois, unless bound for:

Portelet Harbour ⚓ at 49°26'·40N 02°40'·26W, outside moorings. Good holding on sand. Exposed to W. Rky appr; local knowledge advised. Avoid small drying stone quay. .

Lihou Island ⚓ 49°27'·88N 02°39'·46W, off NE corner. Sheltered from E. Between Lihou and Guernsey is a drying causeway. Tide runs fast. Avoid bird sanctuaries on offlying islets. No facilities.

Perelle Bay 49°28'·23N 02°38'·89W. Good holding on sand. Exposed to W; rky appr. Beware Colombelle Rk (1₂) NE of brg 128° on cement mill. ⚓ outside moorings. hotel .

Vazon Bay 49°28'·29N 02°37'·09W. Wide sandy beach for settled conditions, but open to the W. Beware Boue Vazon (3) in appr, many lobster pots, surfers and bathers. Long surf line. Hotel, .

Cobo Bay 49°28'·66N 02°36'·33W. Beware lobster pots and Boue Vazon (3) in appr. Rky appr from S of Moulière. Good holding on sand; ⚓ outside moorings. Hotel, .

Grande Havre 49°30'·11N 02°33'·09W. Very popular, many local moorings. Rky appr 171° as charted; exposed to NW, sheltered from S'lies. ⚓ to W of Hommet de Grève. Stone slip, busy in summer; lying alongside not advised. Hotel .

L'Ancrese Bay 49°30'·45N 02°31'·38W. Good holding on sand. Exposed to the N, but good shelter from S/SW. Hotel café.

Fontenelle Bay 49°30'·48N 02°30'·69W. Good holding on sand. Exposed to the N. Beware drying rks on E of ent. No facilities.

STANDARD TIME (UT)

For Summer Time add ONE hour in non-shaded areas

ST PETER PORT LAT 49°27'N LONG 2°32'W

TIMES AND HEIGHTS OF HIGH AND LOW WATERS

Dates in red are **SPRINGS**
Dates in blue are **NEAPS**

YEAR 2021

JANUARY		FEBRUARY		MARCH		APRIL	
Time	m	Time	m	Time	m	Time	m
1 0145 2.0		16 0242 1.7		1 0204 0.8		1 0300 0.7	
F 0744 8.9		SA 0837 9.2		M 0800 9.8		TH 0857 9.6	
SA 1411 1.9		SA 1507 1.5		M 1427 0.7		TH 1519 1.0	
2010 8.6		2100 8.7		2024 9.5		2116 9.3	
2 0224 2.1		17 0318 1.9		2 0242 0.8		2 0338 1.2	
0822 8.8		0914 8.9		0838 9.8		0937 9.0	
SA 1450 2.0		SU 1543 1.8		TU 1504 0.8		F 1557 1.7	
2048 8.5		2135 8.4		2101 9.4		2155 8.7	
3 0303 2.2		18 0352 2.3		3 0319 1.0		3 0418 1.9	
0902 8.7		0949 8.5		0916 9.5		1020 8.2	
SU 1530 2.1		M 1617 2.3		W 1540 1.1		SA 1629 2.5	
2129 8.3		2208 8.0		2138 9.1		2240 7.9	
4 0344 2.4		19 0425 2.8		4 0356 1.4		4 0508 2.7	
0945 8.5		1024 8.0		0956 9.0		1113 7.3	
M 1613 2.3		TU 1651 2.8		TH 1617 1.7		SU 1733 3.3	
2214 8.1		2243 7.6		2217 8.5		2341 7.1	
5 0429 2.7		20 0500 3.2		5 0436 2.0		5 0621 3.4	
1033 8.2		1102 7.5		1038 8.3		1237 6.7	
TU 1701 2.6		W 1728 3.2		F 1659 2.4		M 1902 3.9	
2305 7.8		2324 7.2		2301 7.9			
6 0522 2.9		21 0543 3.6		6 0525 2.7		6 0124 6.8	
1128 8.0		1149 7.1		1131 7.5		0814 3.6	
W 1757 2.8		TH 1815 3.6		SA 1753 3.2		TU 1433 6.7	
2305 7.8		2324 7.2		2301 7.9		2101 3.8	
7 0005 7.6		22 0016 6.8		7 0002 7.2		7 0305 7.0	
0626 3.1		0641 3.9		0634 3.4		0942 3.2	
TH 1234 7.7		F 1251 6.8		SU 1249 6.9		W 1548 7.2	
1904 3.0		1917 3.8		1915 3.7		2211 3.2	
8 0117 7.5		23 0127 6.7		8 0140 6.8		8 0408 7.6	
0742 3.2		0755 4.0		0822 3.6		1038 2.6	
F 1348 7.6		SA 1408 6.7		M 1441 6.8		TH 1640 7.7	
2021 3.0		2028 3.8		2112 3.7		2301 2.6	
9 0235 7.6		24 0245 6.8		9 0323 7.1		9 0456 8.2	
0901 3.0		0909 3.8		0958 3.2		1123 2.1	
SA 1505 7.8		SU 1521 6.9		TU 1604 7.2		F 1721 8.3	
2137 2.8		2137 3.6		2230 3.2		2343 2.1	
10 0345 8.0		25 0351 7.2		10 0429 7.7		10 0537 8.6	
1012 2.6		1013 3.4		1100 2.6		1203 1.6	
SU 1613 8.1		M 1621 7.3		W 1701 7.8		SA 1759 8.7	
2242 2.4		2235 3.2		2323 2.5			
11 0445 8.4		26 0443 7.7		11 0519 8.3		11 0021 1.7	
1113 2.2		1107 2.9		1148 2.0		0614 9.0	
M 1713 8.4		TU 1711 7.7		TH 1747 8.3		SU 1240 1.4	
2339 2.1		2326 2.7				1834 9.0	
12 0539 8.8		27 0530 8.2		12 0008 2.0		12 0057 1.4	
1208 1.7		1155 2.4		0602 8.8		0650 9.2	
TU 1807 8.7		W 1758 8.2		F 1231 1.5		M 1314 1.3	
				1827 8.8		1907 9.1	
13 0031 1.8		28 0012 2.3		13 0049 1.5		13 0129 1.3	
0628 9.2		0613 8.6		0642 9.2		0722 9.2	
W 1258 1.4		TH 1240 2.0		SA 1310 1.2		TU 1344 1.3	
1855 8.9		1841 8.5		1904 9.1		1937 9.1	
14 0118 1.6		29 0056 1.9		14 0126 1.3		14 0157 1.4	
0714 9.3		0655 8.9		0718 9.4		0752 9.0	
TH 1345 1.3		F 1323 1.6		SU 1345 1.1		W 1411 1.5	
1940 9.0		1922 8.8		1938 9.2		2004 8.9	
15 0202 1.5		30 0138 1.6		15 0159 1.2		15 0223 1.6	
0757 9.4		0735 9.2		0752 9.4		0820 8.8	
F 1427 1.3		SA 1404 1.4		M 1417 1.1		TH 1436 1.8	
2022 9.0		2002 9.0		2008 9.1		2030 8.7	
		31 0217 1.5		31 0222 0.4		31 0222 0.4	
		0814 9.3		0818 10.0		0818 10.0	
		SU 1443 1.3		W 1443 0.5		W 1443 0.5	
		2040 9.0		2039 9.7		2039 9.7	

Chart Datum is 5.06 metres below Ordnance Datum (Local). HAT is 10.3 metres above Chart Datum.

St Peter Port tides – Sark

STANDARD TIME (UT)
For Summer Time add ONE hour in non-shaded areas

ST PETER PORT LAT 49°27'N LONG 2°32'W

TIMES AND HEIGHTS OF HIGH AND LOW WATERS

Dates in red are SPRINGS
Dates in blue are NEAPS

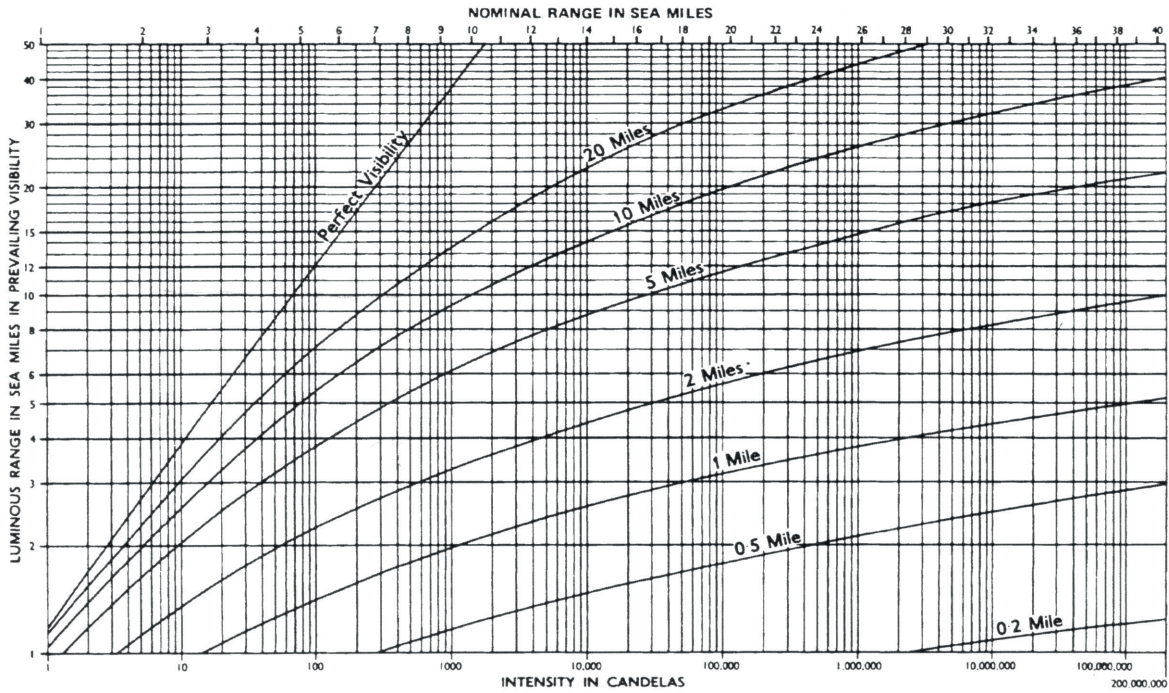
YEAR 2021

SEPTEMBER		OCTOBER		NOVEMBER		DECEMBER					
Time	m	Time	m	Time	m	Time	m				
1	0024 6.4 0702 4.3 W 1311 6.5 1952 4.3	16	0159 6.8 0835 3.9 TH 1447 7.1 2125 3.4	1	0129 6.3 0756 4.4 F 1413 6.6 2049 4.1	16	0324 7.3 0947 3.4 SA 1543 7.7 2215 2.7	1	0337 8.0 0957 2.7 W 1555 8.3 2225 2.2	16	0431 8.0 1056 2.8 TH 1652 8.0 2312 2.6
2	0215 6.4 0834 4.2 TH 1453 6.7 2120 3.9	17	0336 7.2 1001 3.3 F 1601 7.7 2233 2.7	2	0315 6.7 0921 3.9 SA 1532 7.2 2159 3.4	17	0418 7.9 1038 2.7 SU 1633 8.3 2301 2.2	2	0429 8.6 1051 2.1 TH 1649 8.8 2316 1.7	17	0511 8.3 1136 2.5 F 1732 8.2 2350 2.4
3	0341 6.8 0950 3.7 F 1602 7.2 2227 3.3	18	0437 7.8 1058 2.7 SA 1655 8.4 2324 2.1	3	0411 7.4 1021 3.2 SU 1625 7.9 2250 2.6	18	0501 8.5 1122 2.7 M 1715 8.8 2342 1.7	3	0505 8.8 1123 1.8 W 1720 9.1 2347 1.4	18	0542 8.8 1206 2.0 TH 1800 8.9 2347 1.4
4	0437 7.4 1048 3.1 SA 1653 7.8 2318 2.7	19	0524 8.5 1145 2.1 SU 1740 8.9 2335 1.9	4	0456 8.1 1109 2.5 M 1710 8.6 2335 1.9	19	0539 8.9 1201 1.8 TU 1754 9.2 2335 1.9	4	0547 9.3 1208 1.3 TH 1805 9.6 ●	19	0021 1.9 0616 9.0 F 1241 1.9 ○ 1834 8.9
5	0523 8.0 1136 2.5 SU 1737 8.4	20	0008 1.6 0606 8.9 M 1228 1.6 ○ 1821 9.3	5	0538 8.7 1154 1.8 TU 1752 9.2	20	0019 1.5 0614 9.2 W 1238 1.5 ○ 1830 9.3	5	0030 1.0 0629 9.7 F 1252 0.9 1848 9.8	20	0054 1.9 0648 9.0 SA 1312 1.9 1907 8.8
6	0003 2.0 0605 8.5 M 1220 2.0 1819 9.0	21	0049 1.2 0644 9.2 TU 1307 1.3 1859 9.6	6	0018 1.3 0618 9.3 W 1237 1.3 ● 1833 9.6	21	0054 1.4 0648 9.3 TH 1312 1.5 1904 9.3	6	0113 0.9 0710 9.9 SA 1335 0.8 1931 9.8	21	0123 2.0 0719 8.9 SU 1341 2.0 1938 8.7
7	0045 1.5 0645 9.0 TU 1302 1.5 ● 1858 9.4	22	0126 1.1 0719 9.4 W 1342 1.2 1934 9.6	7	0059 0.9 0657 9.6 TH 1317 0.9 1913 9.9	22	0126 1.4 0719 9.3 F 1342 1.6 1935 9.2	7	0154 1.0 0752 9.8 SU 1417 1.0 2013 9.6	22	0151 2.2 0748 8.7 M 1410 2.3 2008 8.4
8	0125 1.2 0724 9.3 W 1341 1.2 1937 9.6	23	0159 1.1 0752 9.3 TH 1414 1.4 2005 9.4	8	0138 0.8 0735 9.8 F 1356 0.8 1951 9.9	23	0154 1.7 0747 9.1 SA 1409 1.8 2003 8.9	8	0235 1.3 0833 9.5 M 1459 1.4 2056 9.1	23	0219 2.5 0817 8.4 TU 1439 2.6 2038 8.1
9	0203 1.0 0801 9.4 TH 1419 1.1 2014 9.7	24	0229 1.4 0821 9.1 F 1441 1.7 2034 9.0	9	0215 0.8 0813 9.7 SA 1434 1.0 2030 9.7	24	0219 2.0 0814 8.8 SU 1433 2.2 2030 8.5	9	0316 1.9 0916 8.9 TU 1544 2.0 2143 8.4	24	0248 2.9 0847 8.1 W 1509 3.0 2110 7.7
10	0239 1.0 0836 9.4 F 1455 1.2 2050 9.5	25	0254 1.8 0847 8.8 SA 1505 2.1 2100 8.6	10	0252 1.2 0850 9.4 SU 1512 1.4 2109 9.2	25	0242 2.4 0839 8.4 M 1457 2.6 2056 8.1	10	0402 2.6 1005 8.2 W 1637 2.7 2238 7.6	25	0320 3.3 0921 7.7 TH 1545 3.3 2150 7.3
11	0313 1.3 0912 9.1 SA 1530 1.5 2128 9.1	26	0316 2.3 0912 8.3 SU 1527 2.6 2126 8.0	11	0329 1.8 0929 8.8 M 1552 2.0 2151 8.4	26	0306 2.9 0905 8.0 TU 1522 3.1 2125 7.6	11	0459 3.4 1107 7.6 TH 1745 3.3 ● 2353 7.1	26	0401 3.7 1006 7.4 F 1633 3.6 2243 7.0
12	0349 1.8 0950 8.7 SU 1608 2.1 2208 8.5	27	0338 2.9 0937 7.8 M 1550 3.1 2153 7.5	12	0410 2.6 1014 8.1 TU 1640 2.8 2242 7.6	27	0334 3.4 0935 7.5 W 1554 3.6 2201 7.1	12	0622 3.9 1233 7.2 F 1916 3.5	27	0457 4.0 1106 7.1 SA 1741 3.8 ● 2354 6.8
13	0429 2.4 1033 8.1 M 1653 2.7 ● 2256 7.8	28	0403 3.4 1006 7.3 TU 1620 3.7 2228 6.9	13	0504 3.4 1114 7.4 W 1748 3.5 ●	28	0411 3.9 1018 7.0 TH 1643 4.0 ● 2258 6.6	13	0131 7.0 0801 3.8 SA 1402 7.3 2039 3.3	28	0617 4.1 1224 7.1 SU 1907 3.7 2039 3.3
14	0519 3.2 1128 7.4 TU 1755 3.4	29	0440 4.0 1048 6.8 W 1710 4.2 ● 2327 6.4	14	0000 6.9 0631 4.0 TH 1252 7.0 1937 3.8	29	0515 4.4 1129 6.7 F 1815 4.3 1937 3.8	14	0250 7.3 0914 3.4 SU 1509 7.6 2140 2.9	29	0120 7.0 0745 3.8 M 1346 7.3 2025 3.3
15	0005 7.1 0636 3.8 W 1258 7.0 1935 3.7	30	0553 4.5 1206 6.4 TH 1905 4.4	15	0201 6.8 0832 3.9 F 1436 7.2 2115 3.4	30	0035 6.4 0709 4.4 SA 1315 6.7 2014 4.0	15	0344 7.7 1006 3.0 M 1600 8.1 2228 2.5	30	0237 7.4 0857 3.3 TU 1456 7.8 2129 2.8
				31	0227 6.8 0840 4.0 SU 1445 7.2 2118 3.4						
								31	0358 8.2 1023 2.4 F 1624 8.3 2252 2.2		

Chart Datum is 5.06 metres below Ordnance Datum (Local). HAT is 10.3 metres above Chart Datum.

LUMINOUS RANGE DIAGRAM

HD574



GEOGRAPHICAL RANGE TABLE

HD5

Elevation in	Height of Eye of Observer in feet/metres																							
	3	7	10	13	16	20	23	26	30	33	39	46	52	59	66	72	79	85	92	98	115	131	14	
ft	1	2	3	4	5	6	7	8	9	10	12	14	16	18	20	22	24	26	28	30	35	40	4:	
m	Range in Sea Miles																							
0 0	2.0	2.9	3.5	4.1	4.5	5.0	5.4	5.7	6.1	6.4	7.0	7.6	8.1	8.6	9.1	9.5	10.0	10.4	10.7	11.1	12.0	12.8	13	
3 1	4.1	4.9	5.5	6.1	6.6	7.0	7.4	7.8	8.1	8.5	9.1	9.6	10.2	10.6	11.1	11.6	12.0	12.4	12.8	13.2	13.6	14.0	14.9	15
7 2	4.9	5.7	6.4	6.9	7.4	7.8	8.2	8.6	9.0	9.3	9.9	10.5	11.0	11.5	12.0	12.4	12.8	13.2	13.6	14.0	14.9	15.7	16	
10 3	5.5	6.4	7.0	7.6	8.1	8.5	8.9	9.3	9.6	9.9	10.6	11.1	11.6	12.1	12.6	13.0	13.5	13.9	14.3	14.6	15.5	16.4	17	
13 4	6.1	6.9	7.6	8.1	8.6	9.0	9.4	9.8	10.2	10.5	11.1	11.7	12.2	12.7	13.1	13.6	14.0	14.4	14.8	15.2	16.1	16.9	17	
16 5	6.6	7.4	8.1	8.6	9.1	9.5	9.9	10.3	10.6	11.0	11.6	12.1	12.7	13.2	13.6	14.1	14.5	14.9	15.3	15.7	16.6	17.4	18	
20 6	7.0	7.8	8.5	9.0	9.5	9.9	10.3	10.7	11.1	11.4	12.0	12.6	13.1	13.6	14.1	14.5	14.9	15.3	15.7	16.1	17.0	17.8	18	
23 7	7.4	8.2	8.9	9.4	9.9	10.3	10.7	11.1	11.5	11.8	12.4	13.0	13.5	14.0	14.5	14.9	15.3	15.7	16.1	16.5	17.4	18.2	19	
26 8	7.8	8.6	9.3	9.8	10.3	10.7	11.1	11.5	11.8	12.2	12.8	13.3	13.9	14.4	14.8	15.3	15.7	16.1	16.5	16.9	17.8	18.6	19	
30 9	8.1	9.0	9.6	10.2	10.6	11.1	11.5	11.8	12.2	12.5	13.1	13.7	14.2	14.7	15.2	15.6	16.0	16.4	16.8	17.2	18.1	18.9	19	
33 10	8.5	9.3	9.9	10.5	11.0	11.4	11.8	12.2	12.5	12.8	13.5	14.0	14.5	15.0	15.5	15.9	16.4	16.8	17.2	17.5	18.4	19.3	20	
36 11	8.8	9.6	10.3	10.8	11.3	11.7	12.1	12.5	12.8	13.2	13.8	14.3	14.9	15.4	15.8	16.3	16.7	17.1	17.5	17.9	18.8	19.6	20	
39 12	9.1	9.9	10.6	11.1	11.6	12.0	12.4	12.8	13.1	13.5	14.1	14.6	15.2	15.7	16.1	16.6	17.0	17.4	17.8	18.2	19.1	19.9	20	
43 13	9.4	10.2	10.8	11.4	11.9	12.3	12.7	13.1	13.4	13.7	14.4	14.9	15.4	15.9	16.4	16.8	17.3	17.7	18.1	18.4	19.3	20.2	20	
46 14	9.6	10.5	11.1	11.7	12.1	12.6	13.0	13.3	13.7	14.0	14.6	15.2	15.7	16.2	16.7	17.1	17.6	18.0	18.3	18.7	19.6	20.4	21	
49 15	9.9	10.7	11.4	11.9	12.4	12.8	13.2	13.6	14.0	14.3	14.9	15.5	16.0	16.5	17.0	17.4	17.8	18.2	18.6	19.0	19.9	20.7	21	
52 16	10.2	11.0	11.6	12.2	12.7	13.1	13.5	13.9	14.2	14.5	15.2	15.7	16.2	16.7	17.2	17.7	18.1	18.5	18.9	19.2	20.1	21.0	21	
56 17	10.4	11.2	11.9	12.4	12.9	13.3	13.7	14.1	14.5	14.8	15.4	16.0	16.5	17.0	17.4	17.9	18.3	18.7	19.1	19.5	20.4	21.2	22	
59 18	10.6	11.5	12.1	12.7	13.2	13.6	14.0	14.4	14.7	15.0	15.7	16.2	16.7	17.2	17.7	18.1	18.6	19.0	19.4	19.7	20.6	21.5	22	
62 19	10.9	11.7	12.4	12.9	13.4	13.8	14.2	14.6	14.9	15.3	15.9	16.5	17.0	17.5	17.9	18.4	18.8	19.2	19.6	20.0	20.9	21.7	22	
66 20	11.1	12.0	12.6	13.1	13.6	14.1	14.5	14.8	15.2	15.5	16.1	16.7	17.2	17.7	18.2	18.6	19.0	19.4	19.8	20.2	21.1	21.9	22	
72 22	11.6	12.4	13.0	13.6	14.1	14.5	14.9	15.3	15.6	15.9	16.6	17.1	17.7	18.1	18.6	19.1	19.5	19.9	20.3	20.7	21.5	22.4	23	
79 24	12.0	12.8	13.5	14.0	14.5	14.9	15.3	15.7	16.0	16.4	17.0	17.6	18.1	18.6	19.0	19.5	19.9	20.3	20.7	21.1	22.0	22.8	23	
85 26	12.4	13.2	13.9	14.4	14.9	15.3	15.7	16.1	16.4	16.8	17.4	18.0	18.5	19.0	19.4	19.9	20.3	20.7	21.1	21.5	22.4	23.2	24	
92 28	12.8	13.6	14.3	14.8	15.3	15.7	16.1	16.5	16.8	17.2	17.8	18.3	18.9	19.4	19.8	20.3	20.7	21.1	21.5	21.9	22.8	23.6	24	
98 30	13.2	14.0	14.6	15.2	15.7	16.1	16.5	16.9	17.2	17.5	18.2	18.7	19.2	19.7	20.2	20.7	21.1	21.5	21.9	22.2	23.1	24.0	24	
115 35	14.0	14.9	15.5	16.1	16.6	17.0	17.4	17.8	18.1	18.4	19.1	19.6	20.1	20.6	21.1	21.5	22.0	22.4	22.8	23.1	24.0	24.9	25	
131 40	14.9	15.7	16.4	16.9	17.4	17.8	18.2	18.6	18.9	19.3	19.9	20.4	21.0	21.5	21.9	22.4	22.8	23.2	23.6	24.0	24.9	25.7	26	
148 45	15.7	16.5	17.1	17.7	18.2	18.6	19.0	19.4	19.7	20.0	20.7	21.2	21.7	22.2	22.7	23.2	23.6	24.0	24.4	24.7	25.6	26.5	27	
164 50	16.4	17.2	17.9	18.4	18.9	19.3	19.7	20.1	20.5	20.8	21.4	22.0	22.5	23.0	23.4	23.9	24.3	24.7	25.1	25.5	26.4	27.2	28	
180 55	17.1	17.9	18.6	19.1	19.6	20.0	20.4	20.8	21.2	21.5	22.1	22.7	23.2	23.7	24.1	24.6	25.0	25.4	25.8	26.2	27.1	27.9	28	
197 60	17.8	18.6	19.3	19.8	20.3	20.7	21.1	21.5	21.8	22.2	22.8	23.3	23.9	24.3	24.8	25.3	25.7	26.1	26.5	26.9	27.7	28.6	29	
213 65	18.4	19.2	19.9	20.4	20.9	21.4	21.7	22.1	22.5	22.8	23.4	24.0	24.5	25.0	25.5	25.9	26.3	26.7	27.1	27.5	28.4	29.2	30	
230 70	19.0	19.9	20.5	21.1	21.5	22.0	22.4	22.7	23.1	23.4	24.0	24.6	25.1	25.6	26.1	26.5	26.9	27.4	27.7	28.1	29.0	29.8	30	
246 75	19.6	20.5	21.1	21.7	22.1	22.6	23.0	23.3	23.7	24.0	24.6	25.2	25.7	26.2	26.7	27.1	27.5	27.9	28.3	28.7	29.6	30.4	31	

Channel Islands

		N/W		metres miles				
GUERNSEY—(contd)								
1558	-- Ldg Lts 286°. Front. S Pier. Head	49 28-9 2 30-8	F R	3	5	Post 2	Vis 230°-340°(110°)	
1558-1	--- Rear. 390m from front	49 29-0 2 31-0	F G	13	..	Clock tower 12	2 F R(vert) on 2 chimneys 300m N	
1559	- Brehon	49 28-3 2 29-2	Iso W 4s	19	9	Beacon on round tower		
1560	- ST PETER PORT. Ldg Lts 220°. Castle Breakwater. Head. Front	49 27-4 2 31-4	Al WR 10s	14	16	Dark round granite tower, white on NE side 12	<i>lr</i> W7-5, R2-5. Vis 187°-007°(180°). Unintens landward. RC (synchronised with fog signal) <i>bl</i> 2-5	
			Horn 15s		
1560-1	--- Belvedere. Rear	49 26-9 2 31-9	Oc W 10s	61	14	White □, orange stripe, on white tower 4	<i>ec</i> 2-5. Vis 179°-269°(90°), intens 217°-223°(6°)	
1562	-- White Rock Pier. Head	49 27-4 2 31-5	Oc G 5s	11	14	Round stone tower 10	<i>ec</i> 1. Intens 174°-354°(180°). Traffic signals	
1567	-- Fish Quay. NW end	49 27-3 2 31-8	F R		2			
1567-2	--- SW end	49 27-3 2 31-9	F R		2			
1569	- Victoria Marina. Ldg Lts 265°. Front. South Pier. Head	49 27-4 2 31-9	Oc R 5s	10	14	White framework tower, red lantern 7	<i>ec</i> 1	
1569-1	---- Rear. 160m from front	49 27-4 2 32-1	Iso R 2s	22	3	..	Vis 260°-270°(10°)	
1570	-- Queen Elizabeth II Marina. Dir Lt 270°	49 27-8 2 31-8	Dir Oc WRG 3s	5	6	..	G258°-268°(10°), W268°-272°(4°), R272°-282°(10°)	
1574	- St Martin's Point	49 25-3 2 31-7	Fl(3)WR 10s	15	14	Flat-roofed white concrete building 5	<i>fl</i> 1, <i>ec</i> 1-5, <i>fl</i> 1, <i>ec</i> 1-5, <i>fl</i> 1, <i>ec</i> 4. R185°-191°(6°), W191°-011°(180°), R011°-081°(70°) <i>bl</i> 1, <i>si</i> 2-5, <i>bl</i> 1, <i>si</i> 2-5, <i>bl</i> 1, <i>si</i> 22	
			Horn(3) 30s		
1580	- Les Hanois (T)	49 26-2 2 42-1	Fl(2)W 13s	33	20	Grey round granite tower, black lantern 33	<i>fl</i> 0-1, <i>ec</i> 3-1, <i>fl</i> 0-1, <i>ec</i> 9-7. Vis 294°-237°(303°). Helicopter landing platform above lantern. 4 F R on masts 1-7M ESE <i>bl</i> 3, <i>si</i> 2, <i>bl</i> 3, <i>si</i> 52	
			Horn(2) 60s		
JERSEY								
1584	- Sorel Point	49 15-7 2 09-4	LFl WR 7-5s	50	15	Black and white chequered round concrete tower 3	<i>fl</i> 2. W095°-112°(17°), R112°-173°(61°), W173°-230°(57°), R230°-269°(39°), W269°-273°(4°). F R lights on radio tower 1-25M ESE	
1585	- Bonne Nuit Bay. Ldg Lts 223°. Pier. Head. Front	49 15-1 2 07-0	F G	7	6	White column		
1585-1	--- Rear. 170m from front	49 15-1 2 07-2	F G	34	6	Red day mark		
1585-5	- Rozel Bay. Dir Lt 245°	49 14-3 2 02-7	Dir F WRG	11	5	White column	G240°-244°(4°), W244°-246°(2°), R246°-250°(4°)	
1586	- St Catherine Bay. Verclut Breakwater. Head	49 13-4 2 00-5	Fl W 1-5s	18	13	White framework tower 9	<i>fl</i> 0-2	
1588	- GOREY. Ldg Lts 298°. Pier. Head. Front	49 11-9 2 01-3	Oc RG 5s	8	12	White metal framework tower 5	<i>ec</i> 1. R304°-353°(49°), G353°-304°(311°)	
1588-1	--- Rear. 490m from front	49 12-0 2 01-6	Oc R 5s	24	8	White, □ orange sides, on stone wall 1	<i>ec</i> 1	
1594	- Ldg Lts 082°. La Grève d'Azette. Front	49 10-2 2 05-0	Oc W 5s	23	14	Red □ on white metal framework tower 20	<i>ec</i> 1. Vis 034°-129°(95°)	

Channel Islands

		N/W	metres miles			
JERSEY—(contd)						
1616	- Noirmont Point	49 10-0 2 10-0	Fl(4)W 12s	18 13	Black tower, white band 10	<i>fl</i> 0-7, <i>ec</i> 1-5) × 3, <i>fl</i> 0-7, <i>ec</i> 4-7
1620	- La Corbière	49 10-8 2 14-9	Iso WR 10s Horn Mo(C) 60s	36	W18 R16 White round stone tower 19 ..	W shore-294°, R294°-328°(34°), W328°-148°(180°), R148°-shore. RC <i>bl</i> 3, <i>si</i> 1, <i>bl</i> 1, <i>si</i> 1, <i>bl</i> 3, <i>si</i> 1, <i>bl</i> 1, <i>si</i> 49
1621	--	49 10-9 2 14-3	F R	Vis 331°-151°(180°), except where obscured by 2 buildings
1622	- Grosnez Point	49 15-5 2 14-7	Fl(2)WR 15s	50 W19 R17	White concrete hut	<i>fl</i> 0-7, <i>ec</i> 1-5, <i>fl</i> 0-8, <i>ec</i> 12. W081°-188°(107°), R188°-241°(53°)
1625	- NW Minquiers (T)	48 59-7 2 20-5	Q W Bell	.. 5	⚓ on yellow buoy, black top	Wave activated
1626	- SW Minquiers (T)	48 54-4 2 19-3	Q(9)W 15s Whis	.. 5	⚓ on yellow buoy, black band	Wave activated

France — North Coast

DIÉLETTE						
1632	- Breakwater. W	49 33-2 1 51-7	Iso WRG 4s	12 W10 R 7 G 7	White tower, green top 11	G070°-135°(65°), W135°-145°(10°), R145°-180°(35°)
1632-1	-- Head	49 33-2 1 51-7	Fl G 4s	6 2	Vis 115°-358°(243°)
1632-2	-- N. Head	49 33-3 1 51-7	Fl R 4s	8 5	White metal mast, red top 6	
1632-3	- Basin corner	49 33-2 1 51-6	Fl(2)R 6s	6 1	Metal post 3	<i>fl</i> 0-2, <i>ec</i> 1-4, <i>fl</i> 0-2, <i>ec</i> 4-2
1632-4	--	49 33-2 1 51-6	Fl(2)G 6s	6 2	Vis 115°-358°(243°)
1638	Cap de Carteret - 180m SW	49 22-4 1 48-4	Fl(2+1)W 15s Horn(3) 60s	81	Grey tower, green top 18 ..	<i>fl</i> 0-3, <i>ec</i> 2-3, (<i>fl</i> 0-3, <i>ec</i> 5-9) × 2. Sig Sm. R lights on pylon 80m NNE <i>bl</i> 2, <i>si</i> 3, <i>bl</i> 2, <i>si</i> 3, <i>bl</i> 2, <i>si</i> 48
CARTERET						
1640	- Jetée Ouest. Head	49 22-1 1 47-2	Oc R 4s	7 7	White metal post, red top 3	<i>ec</i> 1
1641	- Training Wall. Head	49 22-2 1 47-2	Fl G 2-5s	4 2	White metal post, green top 3	<i>fl</i> 0-5
1642	-	49 22-6 1 47-1	Fl(2)R 6s	5 1	Red metal pylon 3	<i>fl</i> 0-2, <i>ec</i> 1-4, <i>fl</i> 0-2, <i>ec</i> 4-2
1642-2	-	49 22-6 1 47-1	Fl(2)G 6s	5 1	Green metal pylon 3	<i>fl</i> 0-2, <i>ec</i> 1-4, <i>ec</i> 0-2, <i>ec</i> 4-2
1643	-	49 22-7 1 46-7	Fl(3)R 12s	Red metal pylon 3	<i>fl</i> 1, <i>ec</i> 1-5, <i>fl</i> 1, <i>ec</i> 1-5, <i>fl</i> 1, <i>ec</i> 6
1643-2	-	49 22-7 1 46-7	Fl(3)G 12s	Green metal pylon 3	<i>fl</i> 1, <i>ec</i> 1-5, <i>fl</i> 1, <i>ec</i> 1-5, <i>fl</i> 1, <i>ec</i> 6
PORT DE PORTBAIL						
1644	- Ldg Lts 042°, La Caillourie. Front	49 19-8 1 42-5	Q W	14 10	White pylon, red top 8	
1644-1	-- Rear. 870m from front	49 20-2 1 41-9	Oc W 4s	20 10	Belfry 35	<i>ec</i> 1
1646	- Training wall. Head	49 19-5 1 43-0	Q(2)R 5s	5 1	White mast, red top 7	<i>fl</i> 0-2, <i>ec</i> 0-8, <i>fl</i> 0-2, <i>ec</i> 3-8
1648	Le Sénéquet	49 05-5 1 39-7	Fl(3)WR 12s	18 W13 R10	White tower 26	<i>fl</i> 1, <i>ec</i> 1-5, <i>fl</i> 1, <i>ec</i> 1-5, <i>fl</i> 1, <i>ec</i> 6. R083-5°-116-5°(33°), W116-5°-083-5°(327°). R lights on mast 7M NE

Meine Notizen

Meine Notizen

Ablenkungstabelle

MgK resp. mwK	Ablenkung
0	-2
10	+1
20	+3
30	+5
40	+7
50	+8
60	+9
70	+10
80	+10
90	+10
100	+9
110	+8
120	+7
130	+6
140	+6
150	+5
160	+4
170	+3
180	+2
190	+2
200	+1
210	-1
220	-2
230	-3
240	-4
250	-5
260	-6
270	-8
280	-9
290	-9
300	-10
310	-10
320	-9
330	-8
340	-6
350	-4
360	-2